



DREDGING

NO CONCESSIONS ON QUALITY
www.dmt-winch.com

DMT
MARINE EQUIPMENT

MAJOR PROJECTS

We hereby proudly present a few examples of our major projects.

DURABLE AND SUSTAINABLE EQUIPMENT FOR YOUR DREDGING VESSEL

Over the years, we have manufactured a diversity of steel products for many different shipping & offshore principals. Through professionally supervised production processes in Europe, we serve our clients with high quality construction capacity. Supported by our in-house engineering department we can provide a total production outsourcing solution.



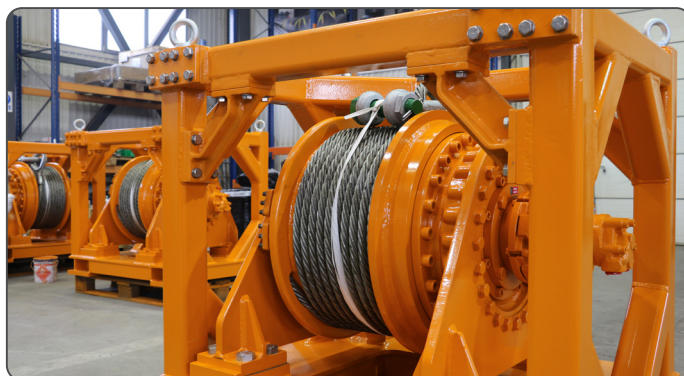
Vessel: Cutter Suction Dredger
Country: USA



Vessel: Dredging Vessel
Country: Russia



Vessel: Dredger
Country: The Netherlands



Vessel: Backhoe Dredger
Country: Finland



Vessel: Dredger
Country: The Netherlands

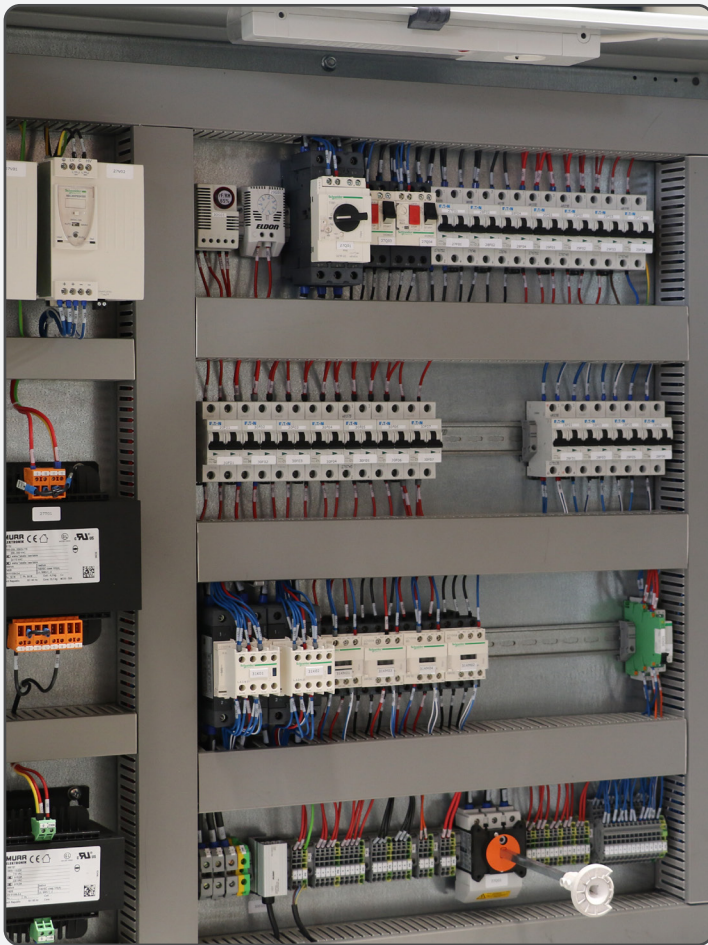


Vessel: Dredging Vessel
Client: Ukraine

As a trustworthy partner, we are proud to have provided our customers high quality, long-lasting products to ensure reliable support in their activities. Among the products that we have delivered for the dredging field we can mention: **winches, valves, drag heads, trailing suction pipes, turning glands, cardans and single hinges**.



Vessel: Dredger
Country: The Netherlands



Cutter Suction Dredger, USA

Delivered equipment:

- Spud Hoist Winch 030-E535[kN]
- Electric Station, Local Control & Wheelhouse 500

TECHNICAL CHARACTERISTICS

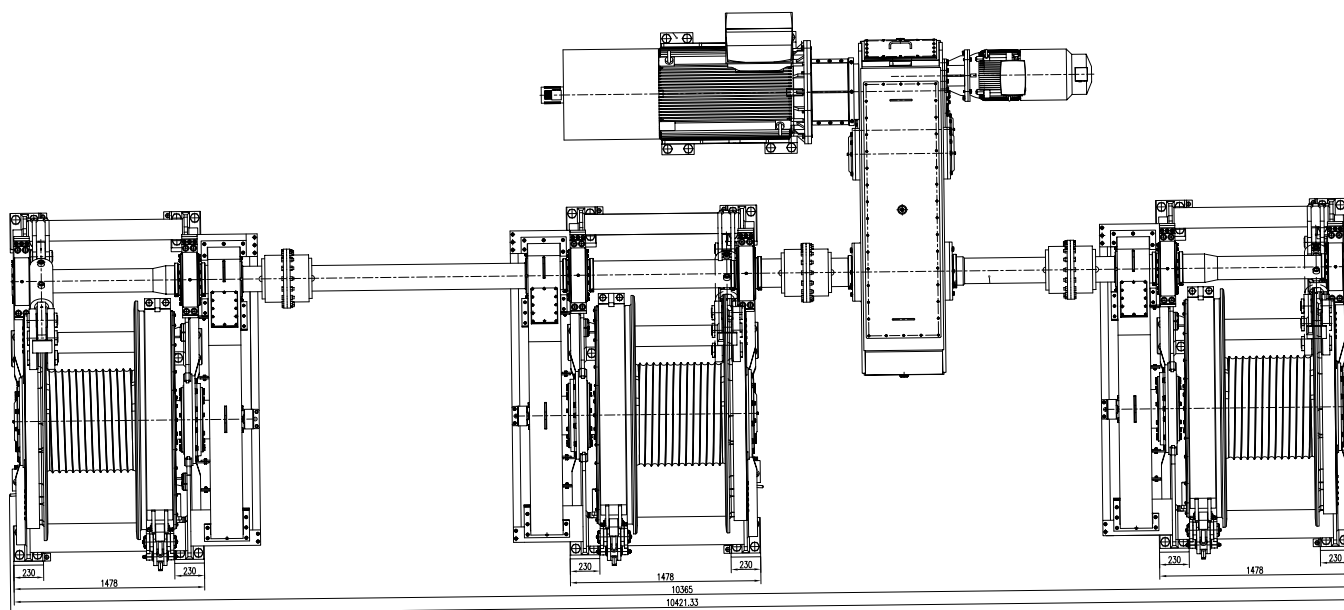
Spud Hoist Winch 030 - E535[kN]

Three drums electric driven winch with pneumatic activated friction brakes and friction clutches.

Working modes of the winch:

1. Moving the vessel by pulling the anchors
2. Spuds "Quick release"

Nominal pull @ 2 nd layer (on each drum):	535 kN
Nominal speed @ 2 nd layer:	0 - 9.14 m/min
Max. speed @ 2 nd layer (working with 1 drum):	0 - 30.5 m/min
Storage capacity of steel wire on each drum:	457 m / 11 layers
Steel cable diameter:	46 mm
Brake holding force @ 2 nd layer:	1.078 [kN]



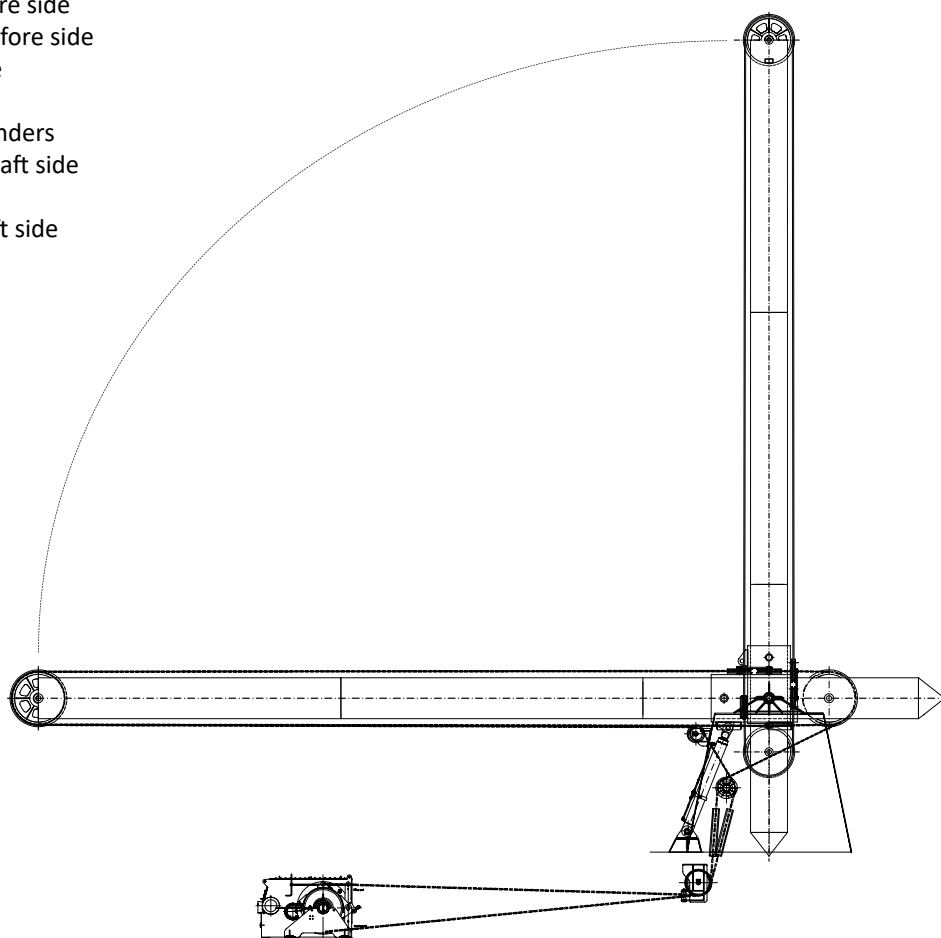
Spud Pole Systems SPW E-85[kN]

The spud winch system is provided with two spud winches, fixed in the bow, intended to keep the barge at fixed position, and another spud winch in the stern, which is intended to move the barge during dredging operation.

The winches are electrically driven and used to lift and lower the spud poles.

The spud winch system consists of the following components:

- Spud assembly fore side
- Winch fore side
- Guiding case fore side
- Spud assembly fore side
- Winch fore side
- Guiding case
- Movement cylinders
- Spud assembly aft side
- Winch aft side
- Guiding case Aft side





Self-Propelled Dredging Vessel, Ukraine

Delivered equipment:

- Spud Pole Winch SPW-E85[kN]
- Stationary spud pole assembly (fore)
- Pivoting spud pole assembly (aft)
- Electro-hydraulic Steering System
- Control and HPU 2x55[kW]



Backhoe Dredger, Finland

Delivered equipment:

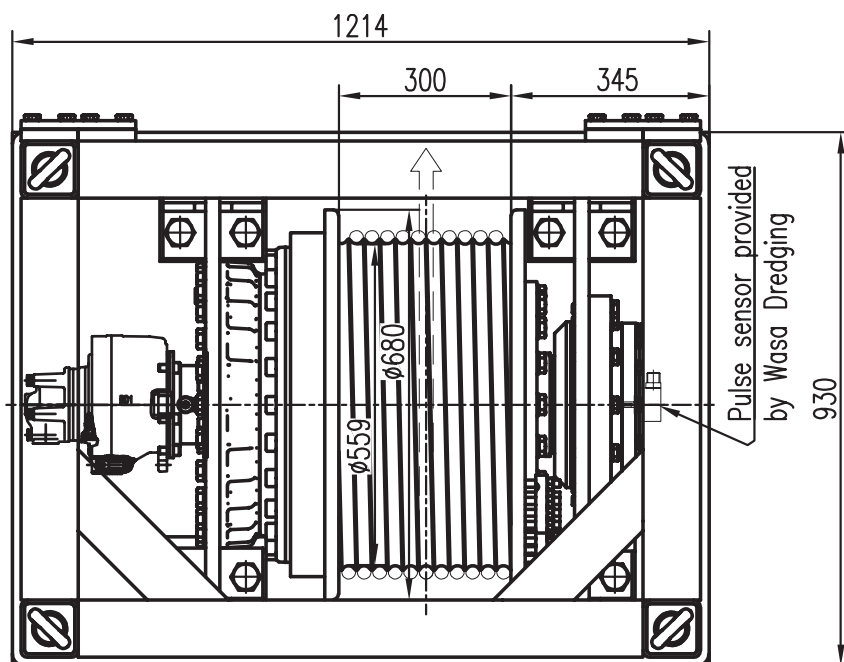
- Mooring Winch MW-010-H250[kN]

TECHNICAL CHARACTERISTICS

Mooring Winch MW-010-H250[kN]

The hydraulically operated mooring winches are used for manoeuvring the vessel while docking by means of mooring drums. The winch consists of the following components: supports, planetary reduction gear, driving hydraulic motor & brake, grooved mooring drum.

High pull @ 1 st layer:	250 [kN]
High speed @ 1 st layer:	21.5 m/min
Storage capacity:	20 m / 1 layer
Brake holding force:	380 [kN]
Hydraulic drive - rotation:	0-1855 rpm



Technical drawing of the S 1000 vehicle, showing dimensions and components. The drawing includes a side view and a top view. Key dimensions are: overall length 5190, overall width 2920, and overall height 2981. The side view shows a wheelbase of 3367, a front overhang of 788, a rear overhang of 275, and a total length of 410. The side view also shows a wheel diameter of 1461, a wheel offset of 47, and a wheel width of 2000. The top view shows an encoder and an electric brake. The drawing is labeled with 'S 1000' and 'S 1000'.

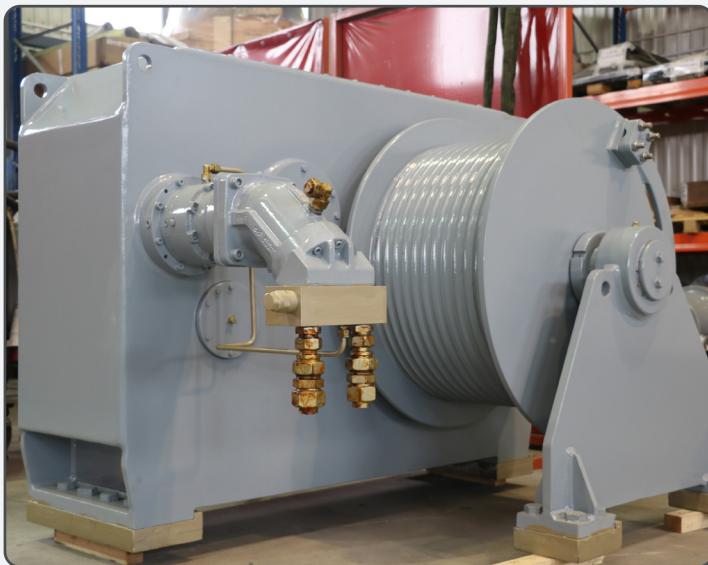
[illegible]



Dredger, The Netherlands

Delivered equipment:

- Side Wire Winch SWW-E450[kN]
- Anchor Hoist Winch AHW-E170[kN]
- Anchor Boom Guy Winch ABGW-E50[kN]
- Cooling Units



Dredger, The Netherlands

Delivered equipment:

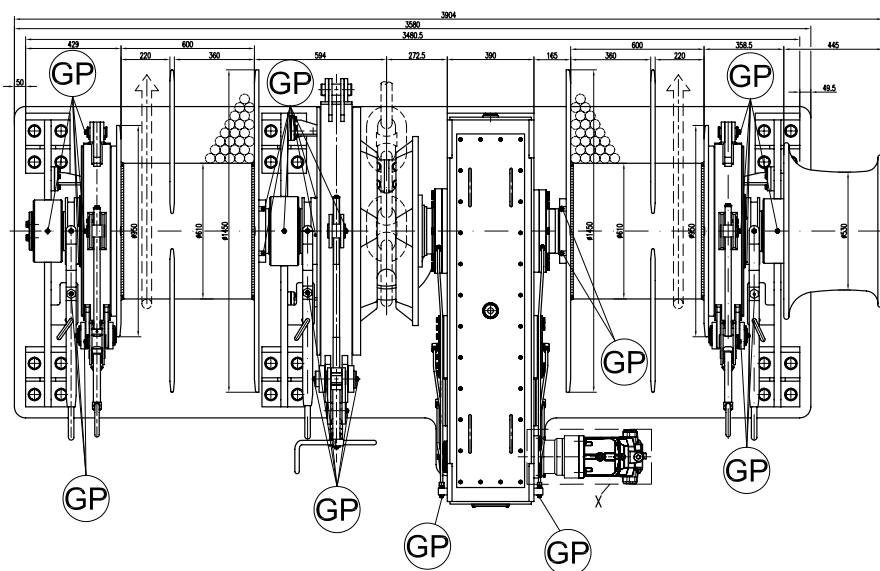
- Anchor Mooring Winch AMW-121-H50K3
- Mooring Winch 020-E118[kN]
- Spooning Winch SW-H200[kN]
- Head Block Winch HBW 010-H240[kN]
- Middle Block Winch MBW 010-H240[kN]
- Anchor Mooring Winch AMW-120-H50K3
- Pilot Ladder Winch PLW-3[kN]
- Bow Coupling Winch BCW-H250[kN]

Nominal Pull: 122 [kN]
 Nominal Speed: 9.5 m/min
 Pitch diameter: 647 mm
 Brake holding force: 882 [kN]

Pull high	
displacement:	134 [kN]
Speed high	
displacement:	9.7 m/min

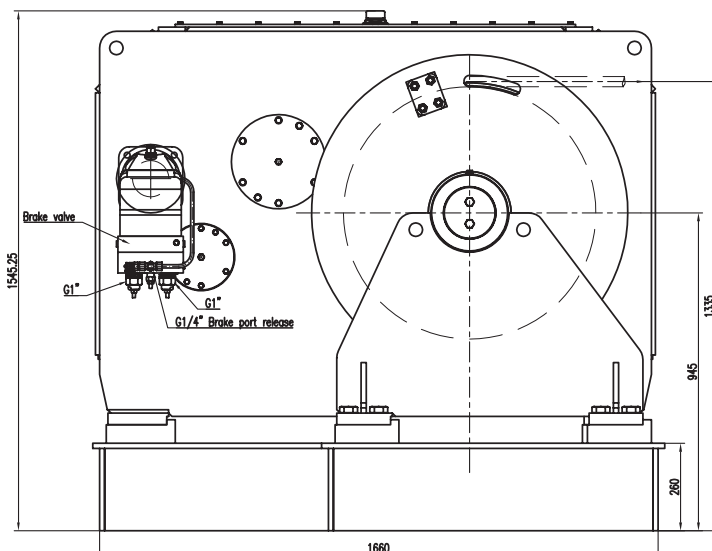
High pull 1 st layer:	120 [kN]
Low Speed 1 st layer:	9.5 m/min
Storage Capacity Working:	647 mm
Brake holding force 1 st layer:	329.6 [kN]

Rotation: 1250/2400 rpm
Nominal Flow: 140 l/min
Nominal Pressure: 110 bar
Displacement: 107.5/56 [cm³/rev]



Nominal pull 1 st layer:	200 [kN]
Nominal Speed 1 st layer:	15 m/min
Storage Capacity:	32 m
Brake holding force:	300 [kN]

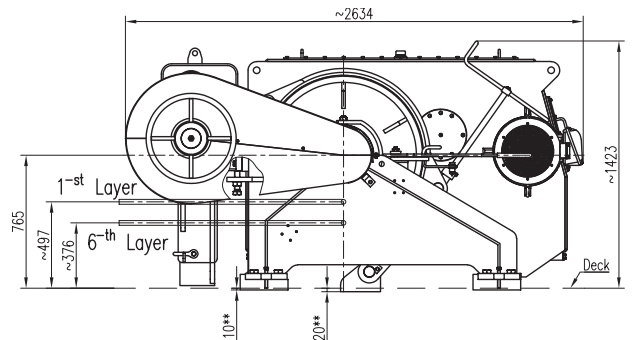
Rotation:	1283 rpm
Nominal Flow:	215 l/min
Nominal Pressure:	180 bar
Displacement:	160.8 [cm ³ /rev]



TECHNICAL CHARACTERISTICS

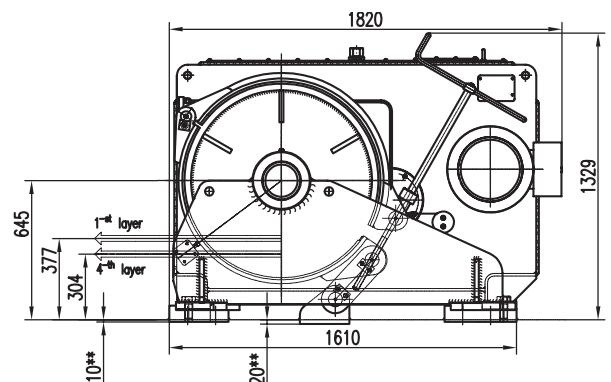
Slipway Mooring Winch 010-E130[kN]

High pull 1st layer: 195[kN]
 Low Speed: 0 - 7 m/min
 Storage capacity: 300 m / 6 layers
 Brake holding force: 786 [kN]
 Electric drive -
 power/speed: 30 [kW]/1470 rpm



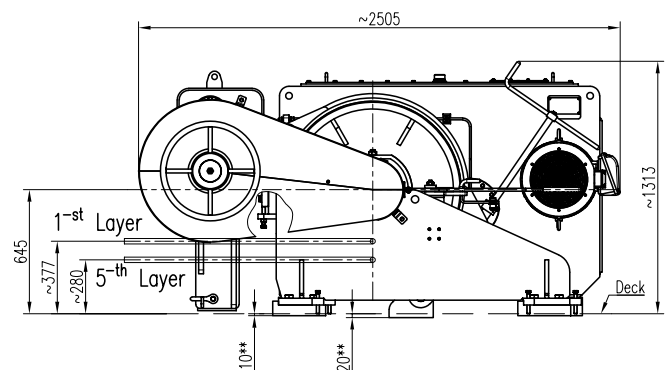
Lifting Mooring Winch 010-E120[kN]

Nominal pull 1st layer: 120 [kN]
 Low Speed: 0-12 m/min
 Storage capacity working part: 100 m / 4 layers
 Brake holding force 1st layer: 786 [kN]
 Electric drive -
 power/speed: 30 [kW]/1465 rpm



Walking Winch 010-E120[kN]

High pull 1st layer: 120 [kN]
 Low Speed 1st layer: 0-12 m/min
 Storage capacity: 200 m / 5 layers
 Brake holding force: 786 [kN]
 Electric drive -
 power/speed: 30 [kW]/1465 rpm

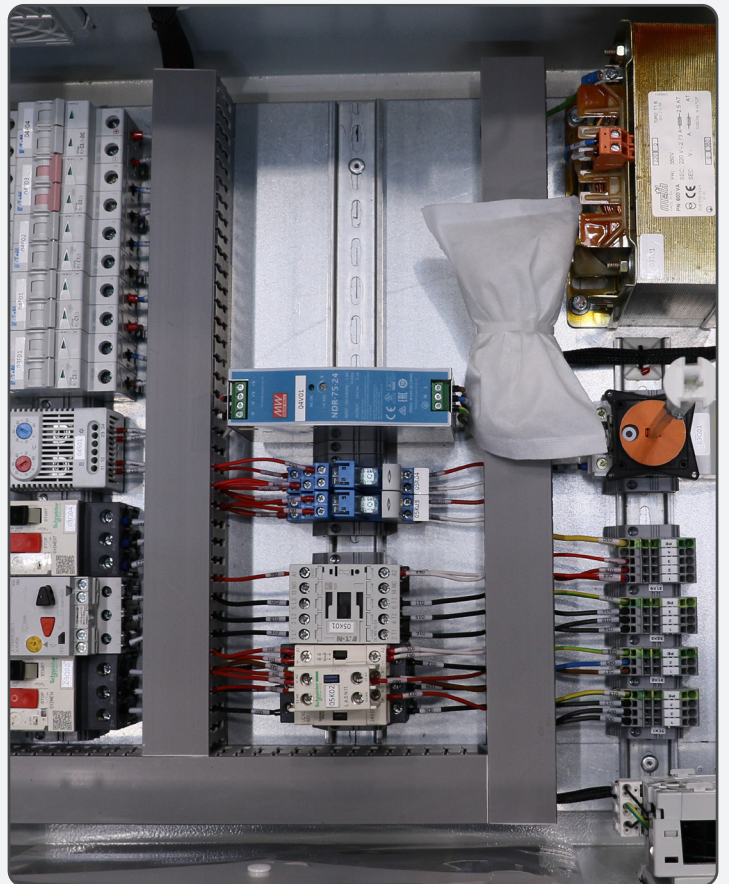




Dredger, Russia

Delivered equipment:

- Slipway Mooring Winch 010-E130[kN]
- Lifting Mooring Winch 010-E120[kN]
- Walking Winch 010-E120[kN]



Dredger, Russia

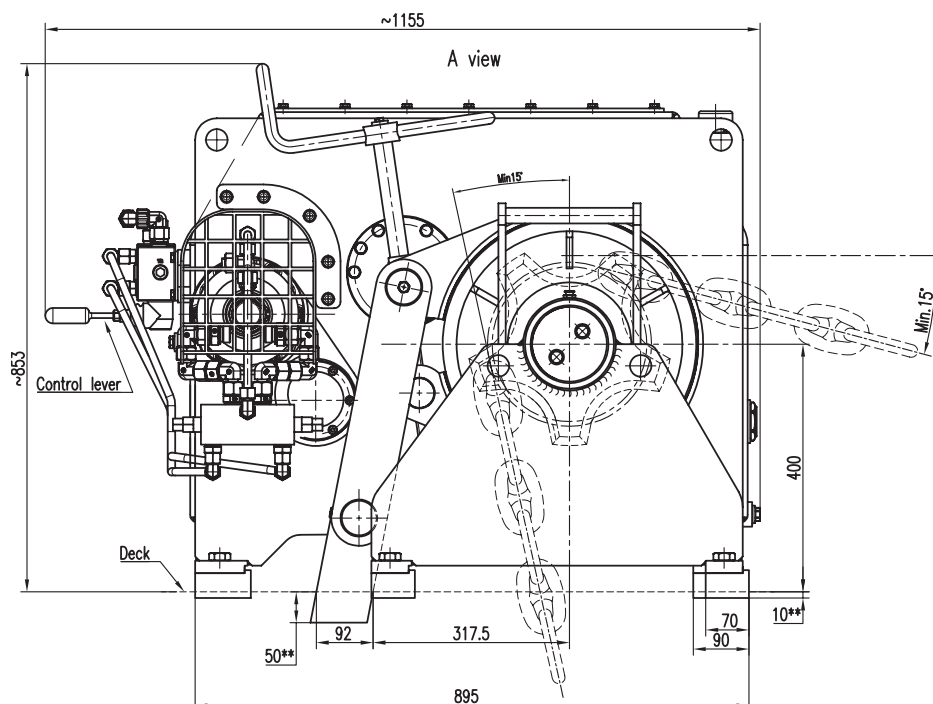
Delivered equipment:

- Anchor Winch AW-100-H20.5k2
- HPU 4[kW] and Electric Control Stations

Anchor Winch AW-100-H20.5k2

The hydraulic driven anchor winch it is used for hauling or veering the anchor. The winch is equipped with a hydraulic motor which has a nominal flow of 17 l/min and a nominal pressure of 100 bar.

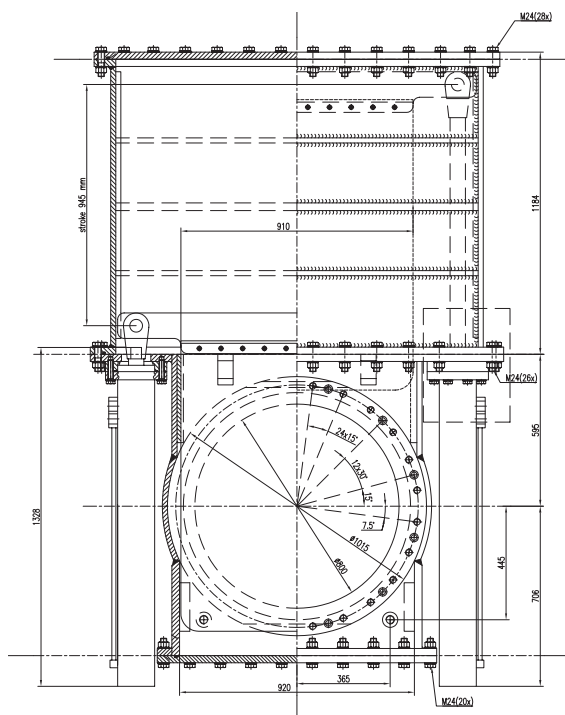
Nominal pull:	9.5 [kN]
Nominal speed:	12 m/min
Pitch diameter/studlink chain:	265 mm / 20.5 k2
Brake holding force:	110 [kN]



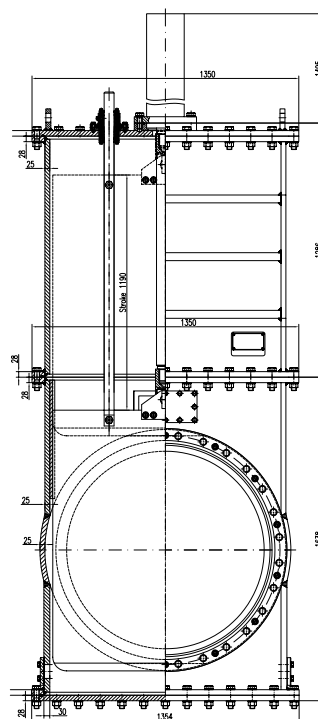
Dredging valves diam. 800 & 1000

We design and produce our dredge valves with high precision and attention to details throughout the complete stages. All the processes, including assembling, testing, greasing and preparing for transportation are carried out internally and closely supervised by our professional quality control team .

Dredging valve diam. 800



Dredging valve diam. 1000

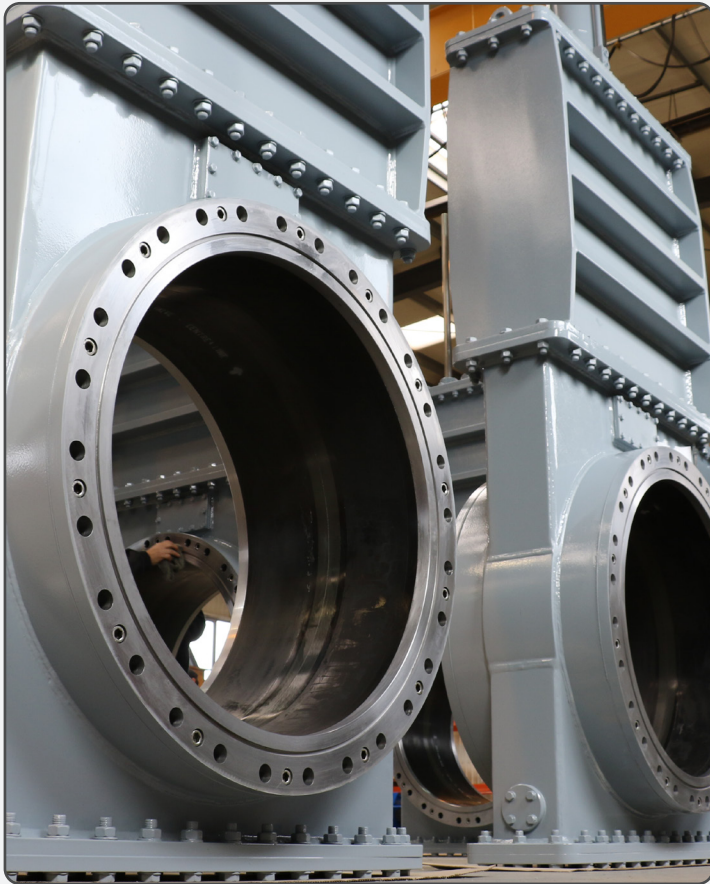




Dredger, The Netherlands

Delivered equipment:

- Dredging valve diam. 800
- Dredging valve diam. 1000



Dredger, The Netherlands

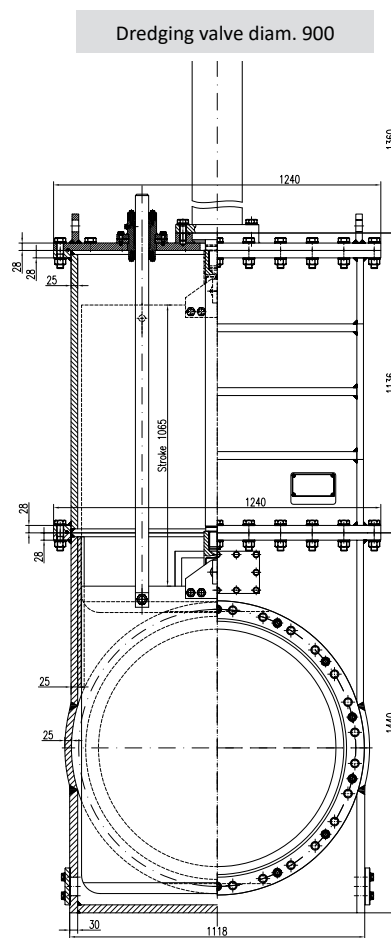
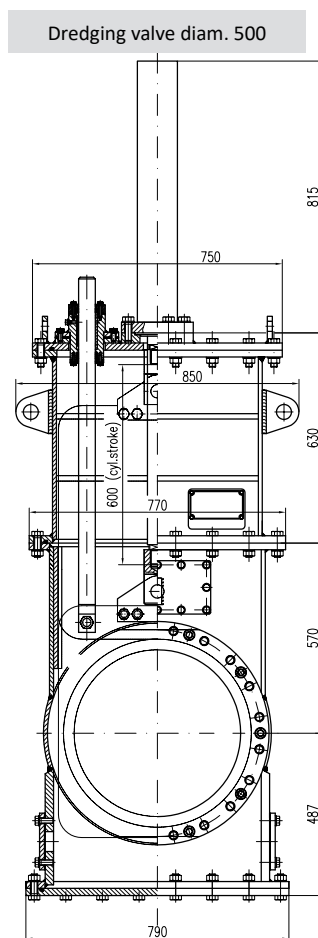
Delivered equipment:

- Dredging valve diam. 500
- Dredging valve diam. 800
- Dredging valve diam. 900
- Dredging valve diam. 1000

TECHNICAL CHARACTERISTICS

Dredging valves diam. 500 & 900

The dredging valves are used to control the flow of water and sand in the suction and discharge pipes of either cutter suction dredgers or trailing suction hopper dredgers.



TECHNICAL CHARACTERISTICS

Anchor-Mooring Winch AMW 220-E24K3

Chain lifter

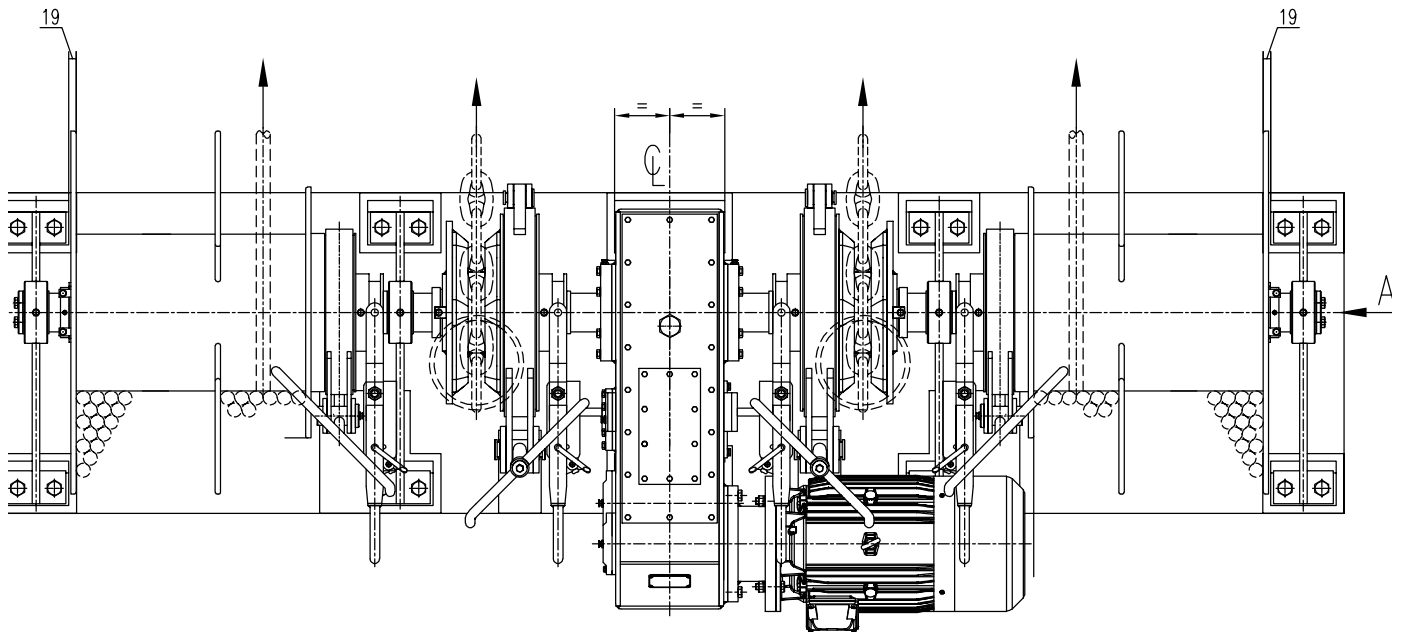
Studlink Chain:	24k3
Nominal Pull:	29.5[kN]
Nominal Speed:	12.4 m/min
Low Pull:	14.8 [kN]
High Speed:	24.8 m/min
Pitch Diameter:	371 mm
Break Out Pull:	44.3[kN]
Brake Holding Force:	215 [kN]

Mooring

Synthetic Rope:	Ø36
Nominal Pull 1 st layer:	24.8[kN]
Nominal Speed 1 st layer:	14.8 m/min
Low Pull:	12.4 [kN]
High Speed:	29.6 m/min
Storage Capacity:	140/7 layers
Brake Holding Force:	128 [kN]
Winding:	top

Drive Electric

Power:	7.5[kW]
Rotation:	725 rpm
Max. Rotation:	1450 rpm
Supply:	400 V / 50 Hz
Duty Type:	S2=30 min
CoolingType:	TENV
Degree of protection:	IP 56



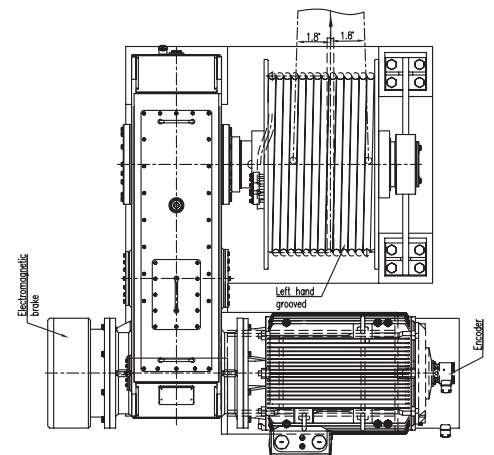
Lifting Winch LW 010-E 300[kN]

Mooring

Steel Wire:	Ø34
Nominal Pull 1 st layer:	250[kN]
Nominal Speed 1 st layer:	7.5 m/min
Stall Pull 1 st layer:	300 [kN]
Low Pull in water 1 st layer:	100[kN]
High Speed in water 1 st layer:	15 m/min
Storage Capacity:	30.5 m 1 layer
Brake Holding Force:	583 [kN]
Winding:	top

Drive Electric

Power:	45[kW]
Rotation:	740 rpm
Max. Rotation:	1500 rpm
Supply:	400 V / 50 Hz
Duty Type:	S2=30 min
CoolingType:	TENV
Degree of protection:	IP 56





Dredger, The Netherlands

Delivered equipment:

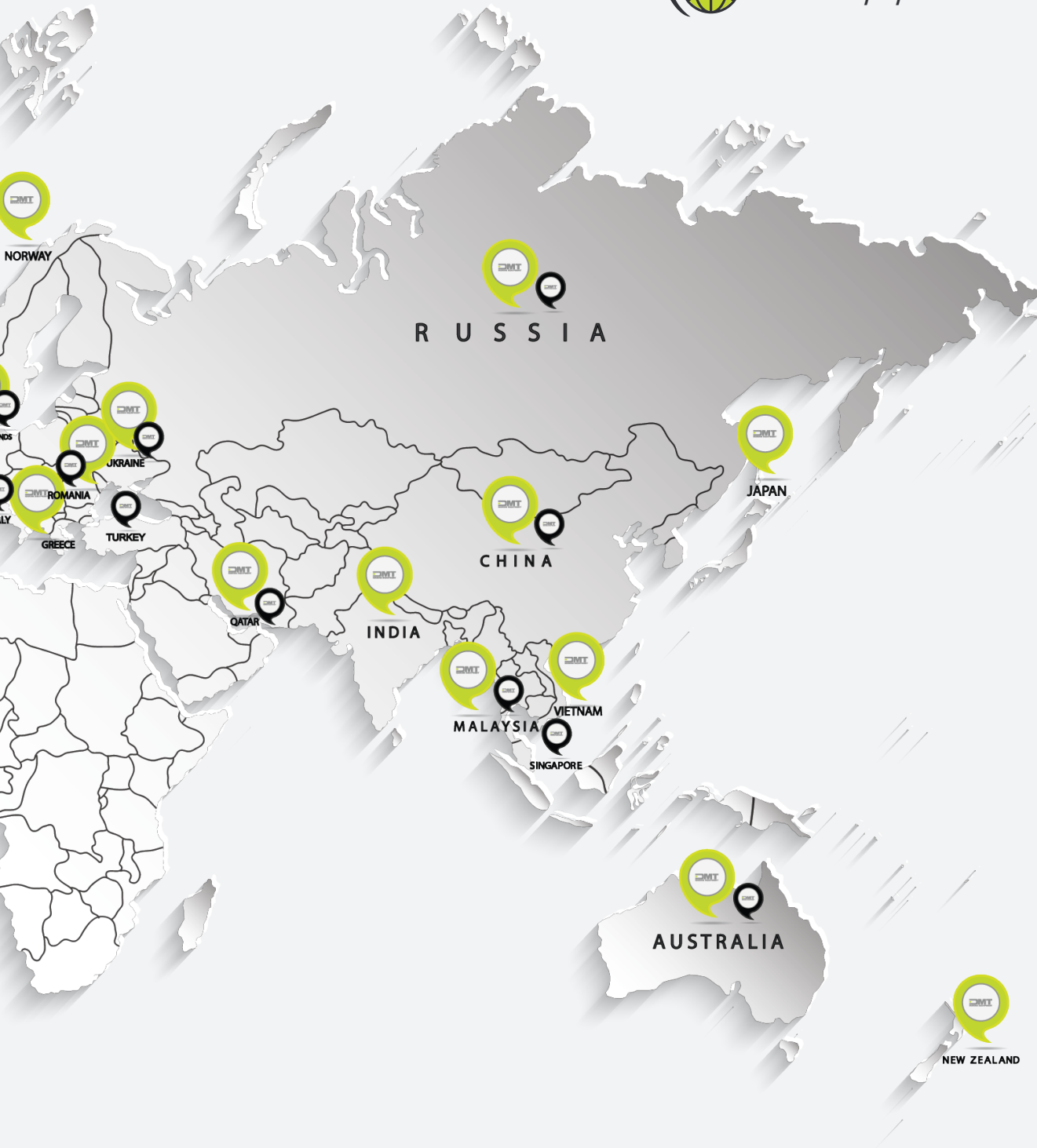
- Anchor-Mooring Winch 220-E24K3
- Mooring Winch 020-E 24[kN]
- Lifting Winch LW 010-E 300[kN]
- Chain Stopper CS 24k3
- End fastening device 24K3
- Electric control AMW 7.5[kW], VFD, Local & Remote
- Electric control MW 7.5 [kW], VFD, Local & Remote



OUR **AFTER SALES** TEAMS
LOCATED WORLDWIDE





AFTER SALES SERVICES
24/7/365



 **DMT Headquarters**
 **After Sales Services**



DRAG HEAD



CONTACTS

DMT MARINE EQUIPMENT Romania

Tel: +40 236 406 006
office.ro@dm-t-winches.com

DMT MARINE EQUIPMENT The Netherlands

Tel: +31 38 460 3304
sales.nl@dm-t-winches.com

DMT MARINE EQUIPMENT Russia

Tel: +7 812 922 04 33
sales.ru@dm-t-winches.com

DMT MARINE EQUIPMENT India

Tel: +91 90732 57388
sales.india@dm-t-winches.com

DMT MARINE EQUIPMENT UAE

Tel: +971 50 6009887
sales.uae@dm-t-winches.com

DMT MARINE EQUIPMENT Singapore

Tel: +65 865 779 58
sales.sg@dm-t-winches.com

DMT MARINE EQUIPMENT Ukraine

Tel: +380 512 366 542
sales.ua@dm-t-winches.com

DMT MARINE EQUIPMENT USA

Tel: +1 985 209 5735
sales.usa@dm-t-winches.com

DMT MARINE EQUIPMENT China

Tel: +86 138 5221 9176
office.ro@dm-t-winches.com

DMT MARINE EQUIPMENT Italy

Tel: +39 010 37 60 800
sales.it@dm-t-winches.com

DMT MARINE EQUIPMENT Turkey

Tel: +90 216 494 00 72
sales.tr@dm-t-winches.com

DMT MARINE EQUIPMENT Australia

Tel: +64 21 689 101
sales.australasia@dm-t-winches.com

DMT MARINE EQUIPMENT Norway

Tel: +47 91 792 960
sales.norway@dm-t-winches.com

OFFICES

Romania | The Netherlands | Russia | Ukraine | Turkey | China

PARTNERS

Italy | Brazil | USA | Norway | Singapore | India | Belgium | UAE | Australia

