



YACHT EQUIPMENT

Full deck equipment for yachts and mega yachts

DMT
MARINE EQUIPMENT



NO CONCESSIONS ON QUALITY

Our business philosophy is making no concessions on quality throughout the entire process. DMT is constantly chosen as a preferred supplier by major shipbuilders and ship owners worldwide for this reason specifically, for the flexibility and for the solution oriented team of specialists.

One of the specialties DMT has, is designing and producing stainless steel deck equipment for yachts and mega yachts.

DMT can provide a high-end classy product either standard or tailored to the specific technical requirements of the client, that will fit even the most pretentious yacht deck.

Being a company that benefits from in-house engineering, production and testing facilities, DMT offers you the advantage of a one stop shop which supplies equipment like: deck, mooring, pockets and under water solutions in one delivery.



OUR PRODUCTS

We understand that a reliable product is essential for profitable, effective and safe vessel operations. We believe that quality is in the details and we continuously challenge ourselves and our beliefs to deliver what we promise: **a product that lasts a lifetime.**



Capstans



Bollards



Fairleads



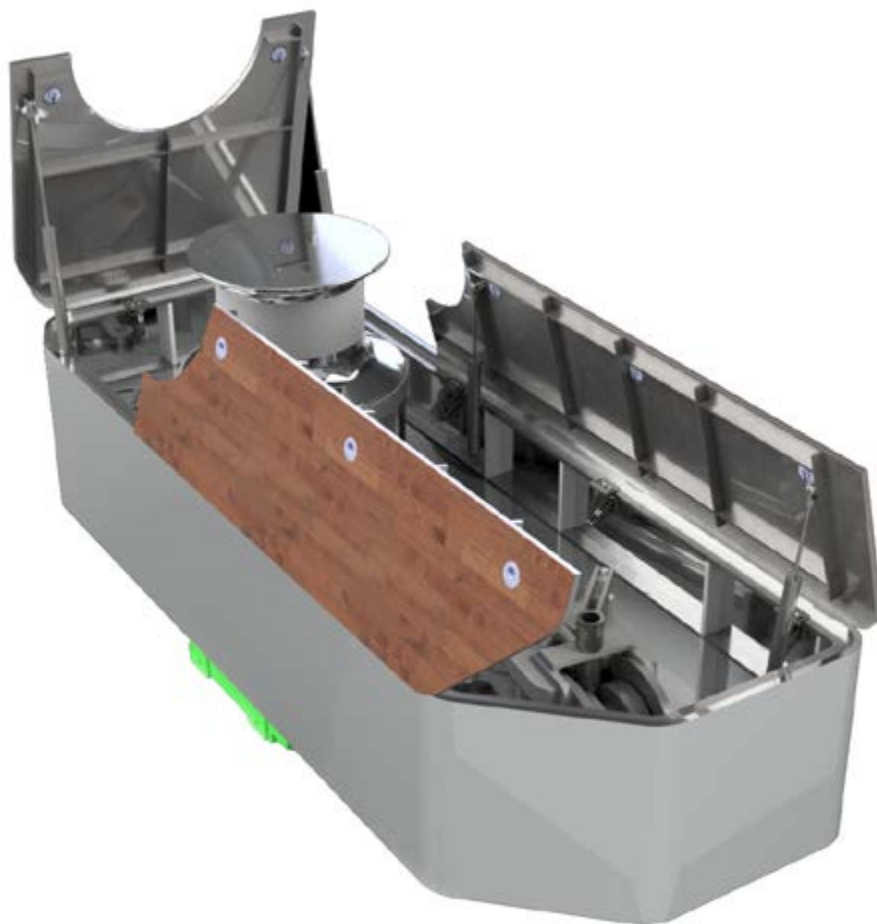
Rope Drums



Chain Stoppers



Tailor Made Products



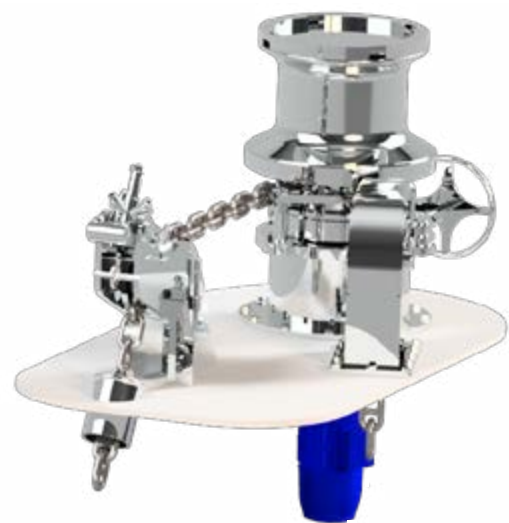
ANCHOR MOORING SYSTEM

We have designed the anchor and mooring system to fit any deck aesthetics as well as to be highly practical. The stainless steel capstan is built with a chain stopper and with deviation rollers. The power will be provided by a frequency controlled electric motor.



FITTING SYSTEM ON BOARD FOR BOX CONCEPT

The design of the Anchor Mooring Capstan System is chosen in order to offer you the desired aesthetics necessary for the pretentious yacht environment. The box is intended to be welded on/in the existing deck structure. The box covers are coated with high quality wood. The foundation flanges of the anchor mooring capstan & rollers are intended to be bolted on the bottom plate of the box.



FITTING SYSTEM ON BOARD FOR BASE STEEL PLATE

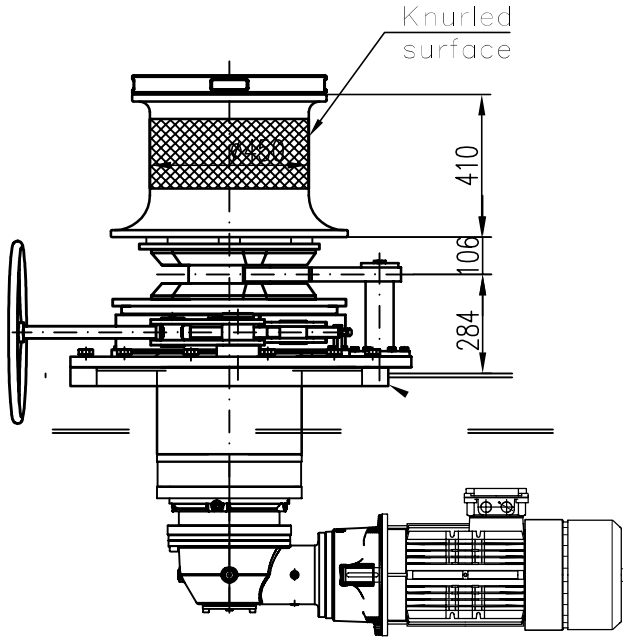
The Anchor Mooring Capstan & Chain Stopper assembly is supplied with a steel base plate foundation. This offers the winch operator sufficient surrounding surface, while operating the clutch, the brake & the chain stopper. If a different shape or length is preferred in order to fit the deck frame or girder spacing, adjustments can be made. The base plate is intended to be welded on/in the existing deck structure.

This is an example from our portfolio. We can deliver any type of configuration according to client specifications.



ANCHOR CAPSTANS

ANCHOR	
Stud Link Chain	Ø 30 k2 MBL = 514 kN
Nominal Pull	39 kN @ 10 m/min
Anchor Brakeout Pull	58 kN @ 5 m/min
Brake Holding Force	411,8 kN (0,8xMBL)
Pitch Diameter	388 mm
WARPING HEAD	
Nominal Pull @	
Max Speed	31 kN @ 13 m/min
Nominal Pull @	
Min Speed	42 kN @ 6,5 m/min
ELECTRIC DRIVEN	
Power	5 / 7,5 kW
Rotation	750 /1500 r.p.m.
Supply	400 V / 50 Hz
Duty Type	S2=30 min
Degree of Protection	IP 54



The above configuration is an example from our portfolio. We can deliver any type of configuration according to client specifications.

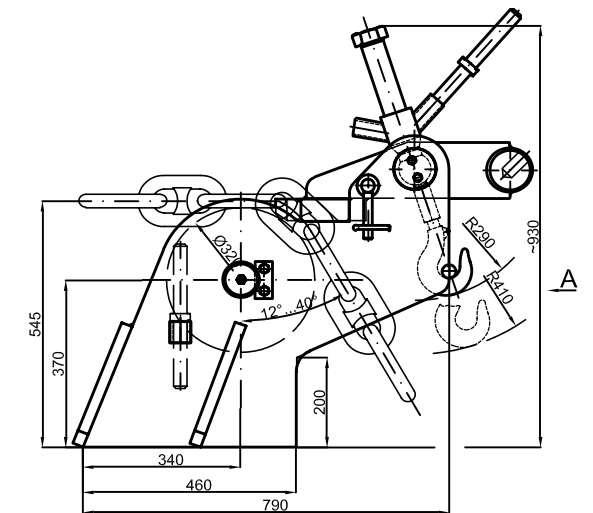




CHAIN STOPPERS

MIRROR POLISHED

Chain Type	Stud-Link Anchor Chain
Chain Size	Ø 30
Testing Force	411 kN for Ø30k2



The above configuration is an example from our portfolio. We can deliver any type of configuration according to client specifications.



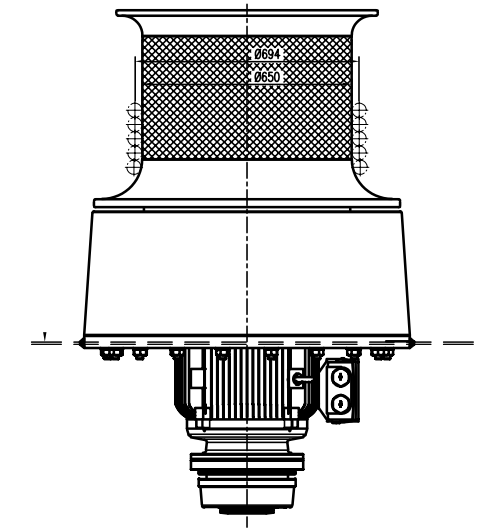
MOORING CAPSTANS

WARPING HEAD

Nominal Pull	150[kN]
Nominal Speed	13.7 m/min
Diameter Of Rope	Ø 44 mm

ELECTRIC DRIVEN

Power	37kW
Rotation	2150 r.p.m.
Supply	400V/50Hz
Duty Type	S2 = 30
Protection Degree	IP 54



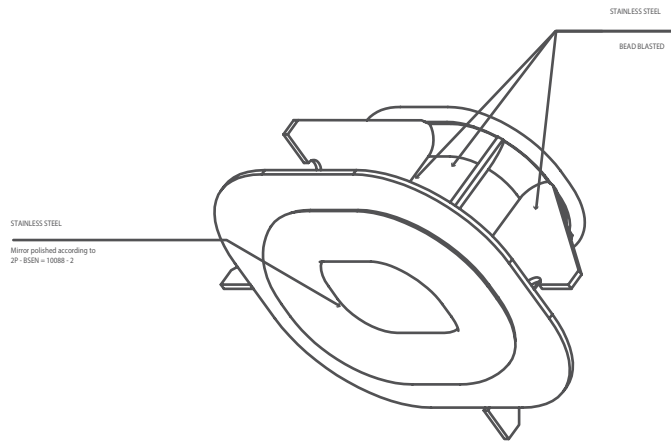
The above configuration is an example from our portfolio. We can deliver any type of configuration according to client specifications.



PANAMA FAIRLEADS

MIRROR POLISHED

Rope Diameter	Ø 44 mm
MBL	400 kN
Rope	Synthetic
Finishing	Glass Bead Blasted



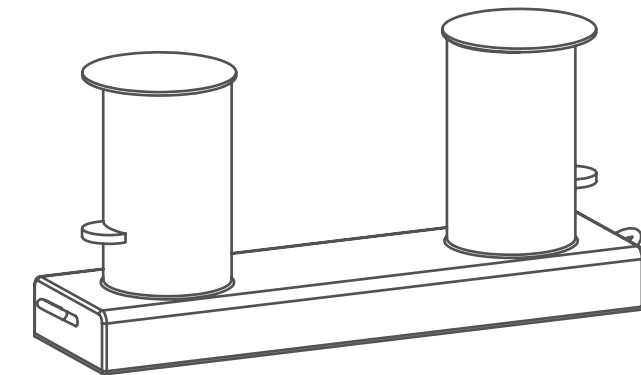
The above configuration is an example from our portfolio. We can deliver any type of configuration according to client specifications.



BOLLARDS

MIRROR POLISHED

Rope Diameter	Ø 44 mm
SWL	80 kN
Rope	Synthetic
Finishing	Glass Bead Blasted



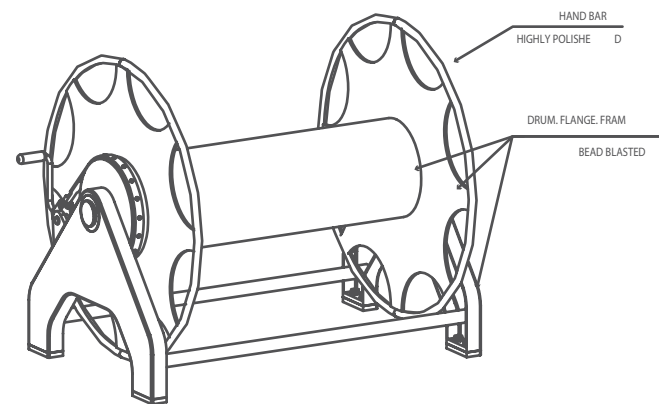
The above configuration is an example from our portfolio. We can deliver any type of configuration according to client specifications.



ROPE DRUMS

MIRROR POLISHED

Storage	Ø 52 mm
Capacity	160 m / 5 layers
Rope	Synthetic
Finishing	Glass Bead Blasted



The above configuration is an example from our portfolio. We can deliver any type of configuration according to client specifications.



AFTER SALES SERVICES 24/7/365

DMT Marine Equipment is not only a winch and deck equipment provider, but also a reliable partner that is able to put at its customers' disposal around the clock services. We are equipped with the knowledge and experience to provide you service support, high quality spare parts and maintenance for your older products or repairs.

Our after sales services also include service contracts, commissioning and systems analysis. Our staff is highly skilled in fields such as hydraulics, mechanics, electrics and software and is willing to serve your purposes. Moreover, at DMT, we offer trainings and courses for operators and maintenance personnel.

We offer you long term support and an inspection program to ensure that our products will have the expected life span.

CONTACTS

DMT MARINE EQUIPMENT Romania

Tel: +40 236 406 006
office.ro@dm-t-winces.com

DMT MARINE EQUIPMENT The Netherlands

Tel: +31 38 460 3304
sales.nl@dm-t-winces.com

DMT MARINE EQUIPMENT Russia

Tel: +7 812 922 04 33
sales.ru@dm-t-winces.com

DMT MARINE EQUIPMENT India

Tel: +91 90732 57388
sales.india@dm-t-winces.com

DMT MARINE EQUIPMENT UAE

Tel: +971 50 6009887
sales.uae@dm-t-winces.com

DMT MARINE EQUIPMENT Singapore

Tel: +65 865 779 58
sales.sg@dm-t-winces.com

DMT MARINE EQUIPMENT Ukraine

Tel: +380 512 366 542
sales.ua@dm-t-winces.com

DMT MARINE EQUIPMENT USA

Tel: +1 985 209 5735
sales.usa@dm-t-winces.com

DMT MARINE EQUIPMENT China

Tel: +86 138 5221 9176
office.ro@dm-t-winces.com

DMT MARINE EQUIPMENT Italy

Tel: +39 010 37 60 800
sales.it@dm-t-winces.com

DMT MARINE EQUIPMENT Turkey

Tel: +90 216 494 00 72
sales.tr@dm-t-winces.com

DMT MARINE EQUIPMENT Norway

Tel: +47 91 792 960
sales.norway@dm-t-winces.com

DMT MARINE EQUIPMENT Australia

Tel: +64 21 689 101
sales.australasia@dm-t-winces.com

