

DIVING SYSTEMS

NO CONCESSIONS ON QUALITY
www.dmt-winches.com

DMT
MARINE EQUIPMENT



DIVING INSTALLATIONS

Wet Bell Handling System Moon Pool

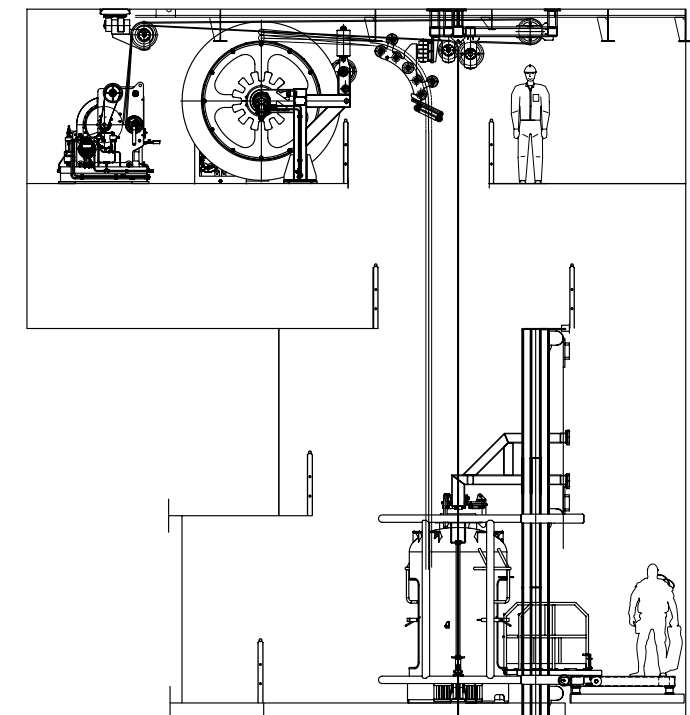
This is an open wet bell handling system that allows three divers to work at a depth of up to 60 metres. It is designed for intermittent operations for undefined periods.

Capacity - Designed to accommodate 3 persons: 2 divers and 1 standby diver (bell man)
The temperature range of the system : 0°C up to +35°C

- Working depth max.: 60 meters
- Safe Working Load: 3680 kg
- Bell winch working load: 3680 kg
- Clump winch working load: 2290 kg
- Umbilical winch working load 560 kg

The wet bell system consists of the followings components:

- Ceiling frame
- Umbilical winch
- Umbilical fairleader
- Clump winch
- Clump weight
- Bell winch
- Band brakes
- Spooling devices for each winch
- Open wet bell
- Adjustable platform
- Cursor
- Cable Rollers
- Hydraulic installation
- Hydraulic power pack





(c) IHC Hytech B.V.

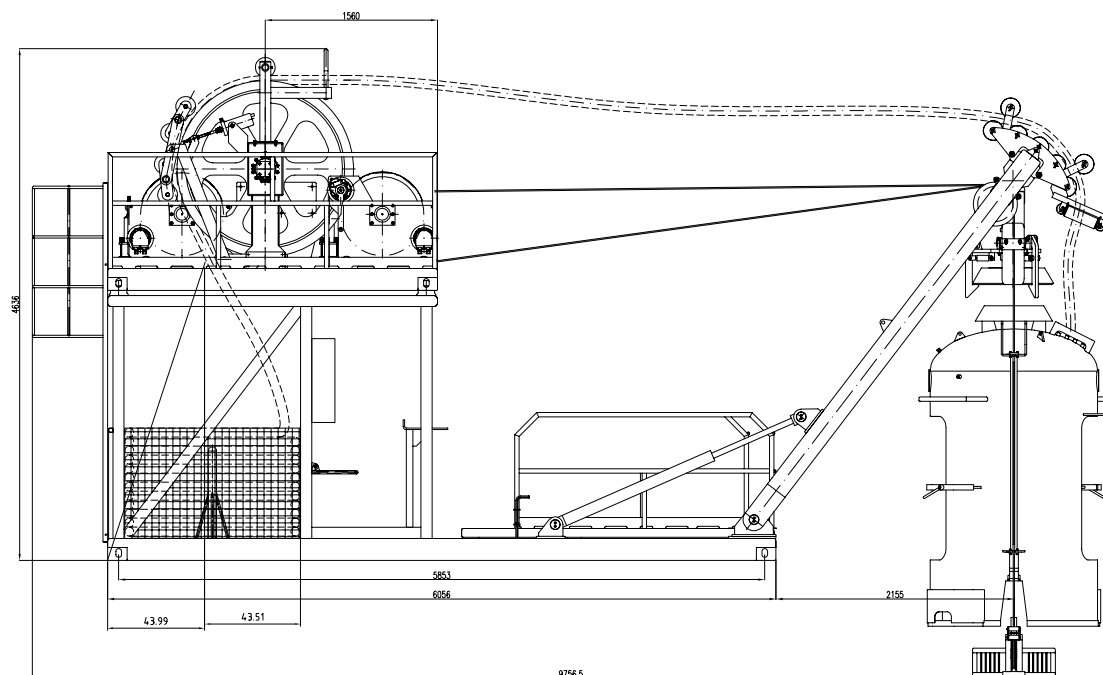
DIVING INSTALLATIONS

Wet Bell Launch & Recovery System

This is an open wet bell handling system which is designed for intermittent operations for undefined periods.

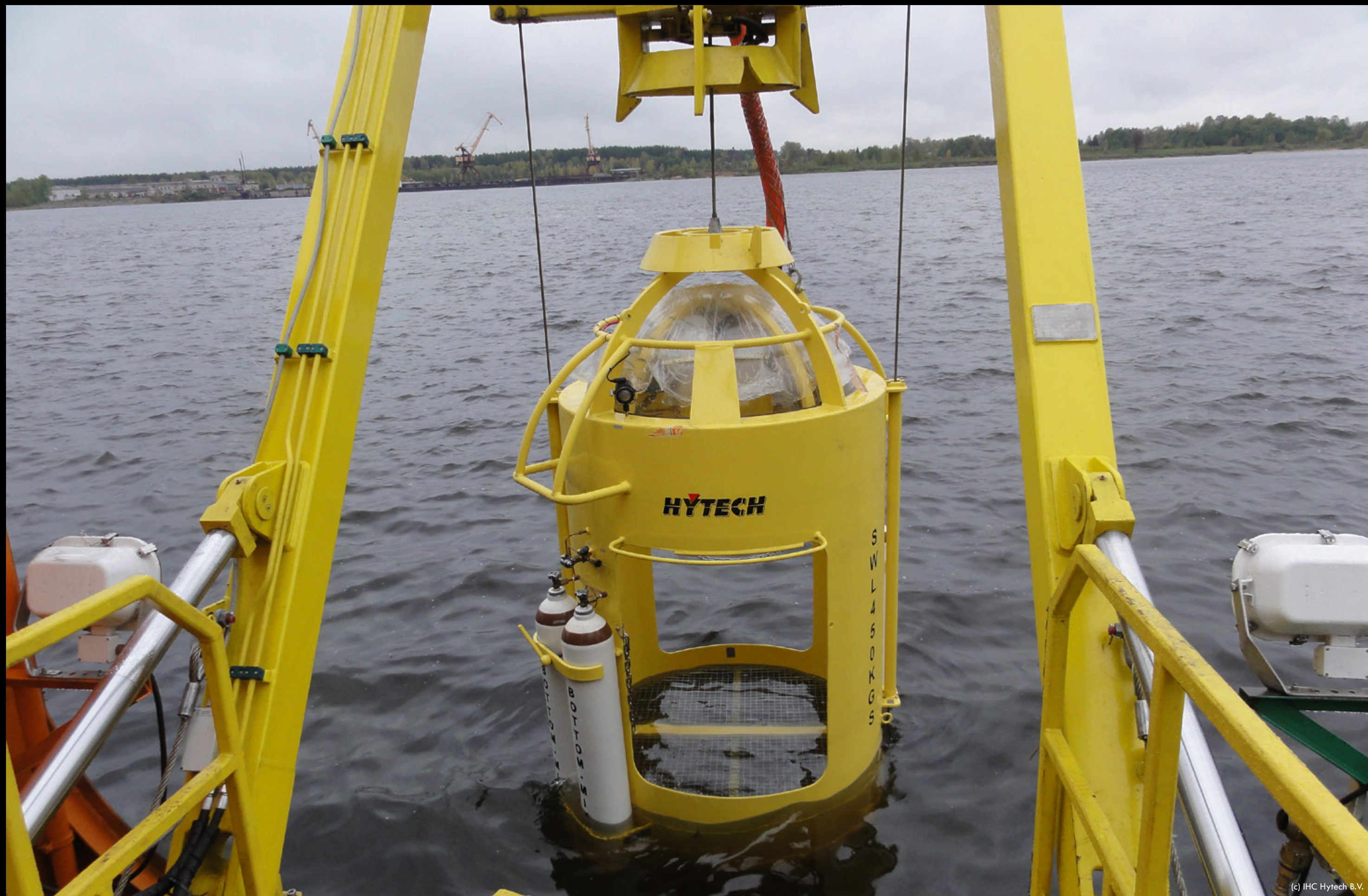
The wet bell system consists of the followings components:

- Base Frame
- Top Frame
- Bell winch with shaft
- Ladder
- Clump winch with shaft
- Power sheave for umbilical
- A Frame
- Wet bell
- Clump weight
- Adjustable platform
- Galvanised steel wire rope
- Rope reel winch
- Hydraulic installation
- Hydraulic power pack



(c) IHC Hytech B.V.

VESSEL: DIVING VESSEL
CLIENT: IHC HYTECH B.V.



(c) IHC Hytech B.V.

DIVING INSTALLATIONS

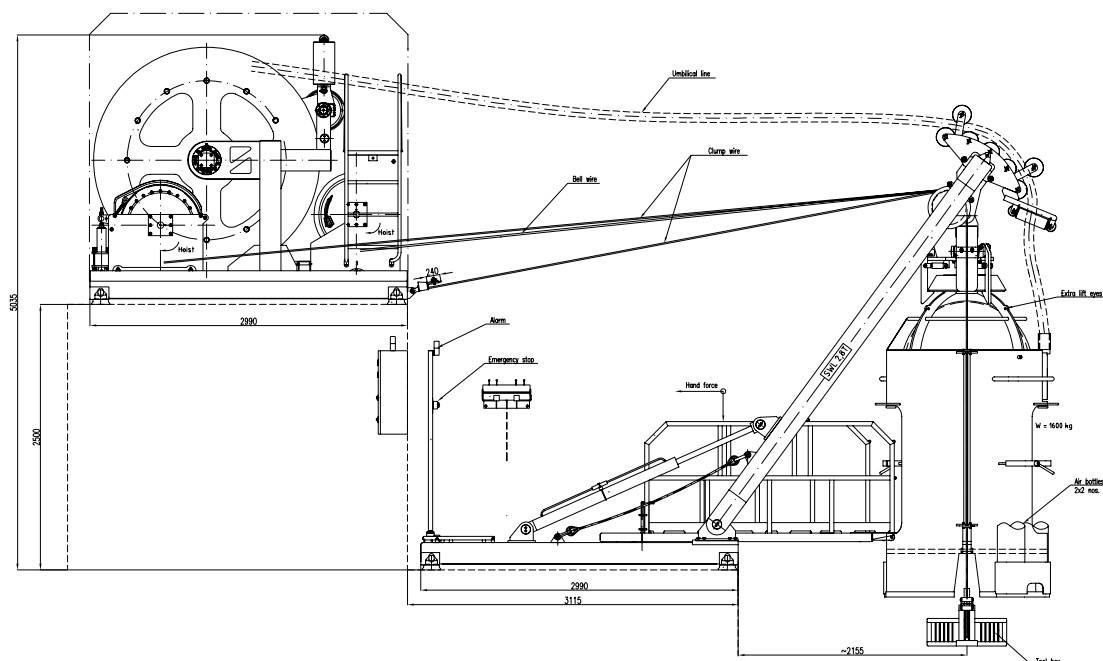
Wet Bell Launch & Recovery System

This is a Transportable wet bell launch and recovery system which is designed for intermittent operations for undefined periods.

The wet bell system consists of the followings components:

- Base Frame;
- Top Frame;
- Bell winch;
- Clump winch with shaft;
- Reel for umbilical;
- A Frame;
- Wet bell;
- Clump weight;
- Adjustable platform;
- Galvanised steel wire rope;
- Four point mooring system;
- Hydraulic installation;
- Hydraulic power pack.

The transportable system for the lunch and recovery of the wet bell described above is designed and build for operating in arctic conditions in a temperature range between -30°C and 50°C.



(c) IHC Hytech B.V.

VESSEL: DIVING VESSEL
CLIENT: IHC HYTECH B.V.



DIVING INSTALLATIONS Wet Bell Moon Pool System

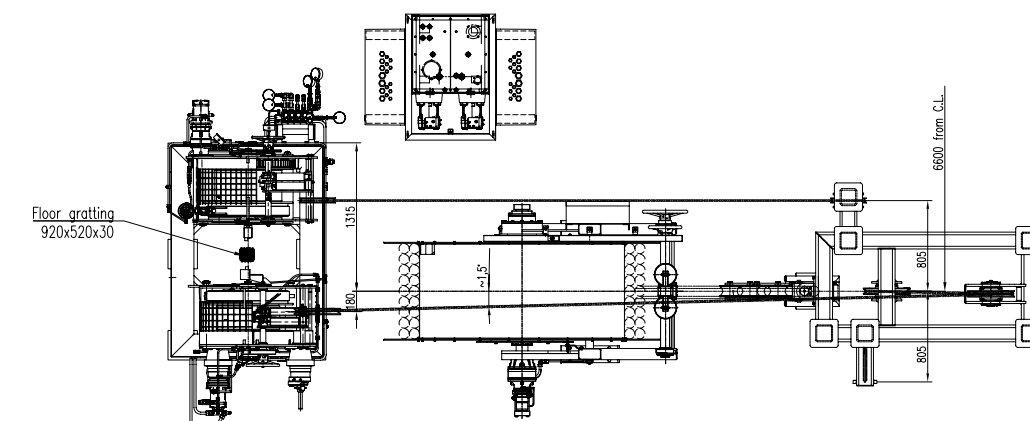
This is an open wet bell handling system that allows three divers to work at a depth of up to 60 metres. It is designed for intermittent operations for undefined periods.

The wet bell system consists of the followings components:

- Ceiling frame;
- Umbilical winch;
- Umbilical fairleader;
- Clump winch;
- Clump weight;
- Bell winch;
- Band brakes;
- Spooling devices for each winch;
- Open wet bell;
- Adjustable platform;
- Cursor;
- Cable Rollers;
- Hydraulic installation;
- Hydraulic power pack.

Capacity - Designed to accommodate 3 persons: 2 divers and 1 standby diver (bell man)
The temperature range of the system 0°C up to +35°C

- Working depth max.: 60 meters
- Safe Working Load: 3650 kg
- Bell winch working load: 3650 kg
- Clump winch working load: 2260 kg
- Umbilical winch working load: 560 kg





NO CONCESSIONS ON QUALITY
www.dmt-winch.com

IHC HYTECH Gantry Wet Bell System

[click for movie](#)

DMT
MARINE EQUIPMENT

DIVING INSTALLATIONS

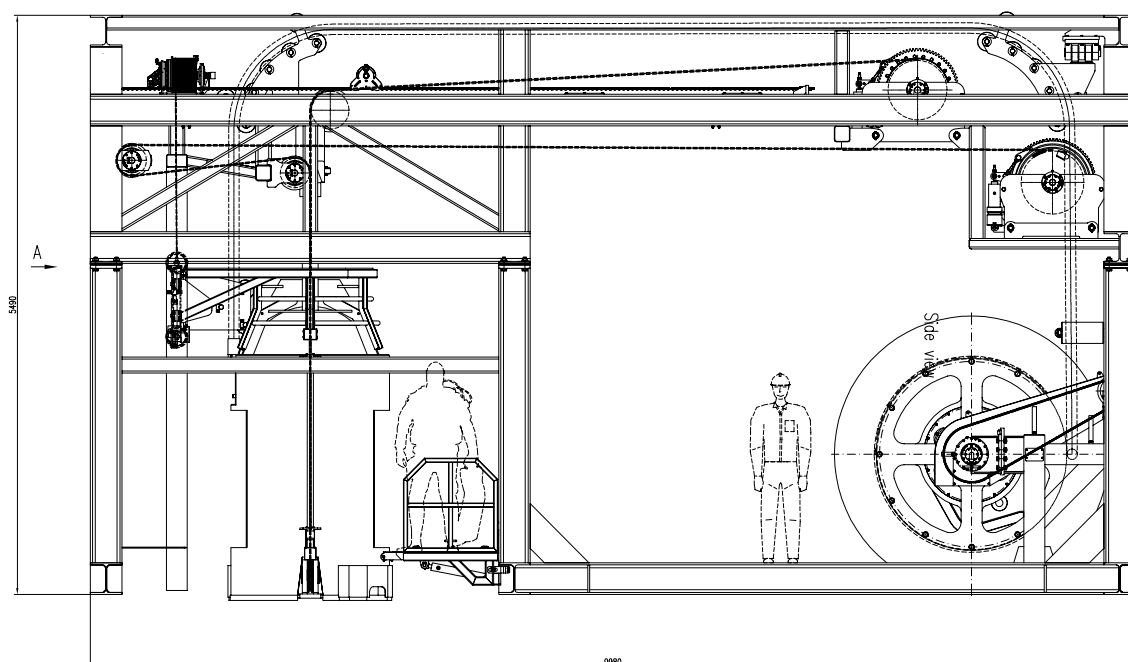
Wet Bell Launch & Recovery System

This is a LARS System that allows three divers to work at a depth. It is designed for intermittent operations for undefined periods.

The wet bell system consists of the followings components:

- Gantry frame;
- Umbilical winch;
- Umbilical fairleader;
- Clump winch;
- Clump arrangement;
- Bell winch;
- Band brakes;
- Spooling device;
- Open wet bell;
- Drivers platform;
- Cursor;
- Cable Rollers;
- Hydraulic installation;
- Hydraulic power pack.

The total weight of the LARS System is ~24008 kg.



VESSEL: DIVE & HYDROGRAPHIC SUPPORT VESSEL
CLIENT: IHC HYTECH B.V.



(c) IHC Hytech B.V.

DIVING INSTALLATIONS Wet Bell Handling System

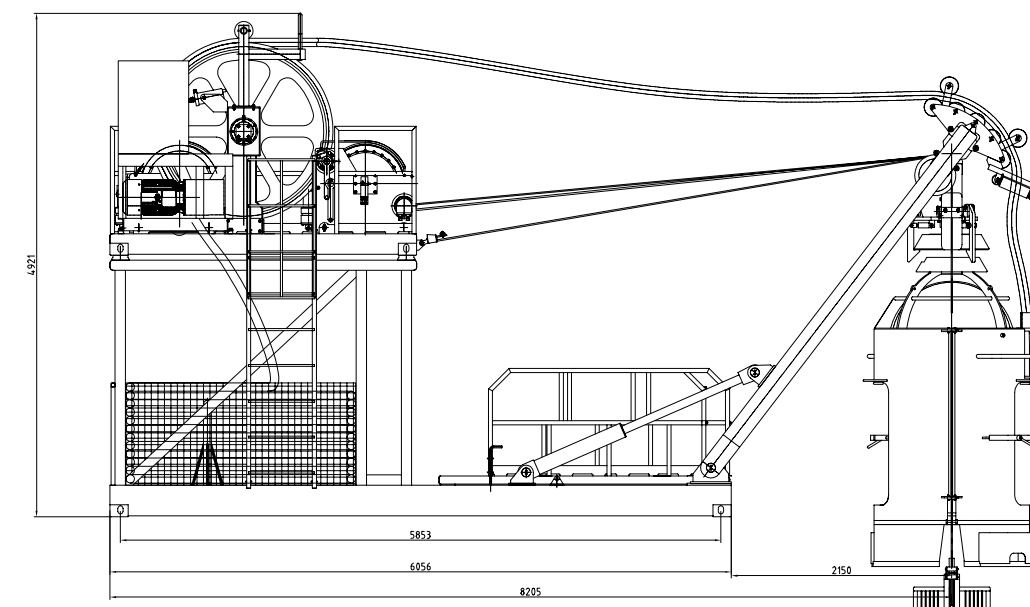
The WBHS3-100 is an open wet bell handling system that allows three divers to work at a depth of up to 60 meters. This wet bell handling system can be integrated in a ship. The bell is designed for strong current operations and is equipped with an extra heavy clump weight.

The wet bell system consists of the followings components:

- Base frame;
- A-Frame;
- Top frame;
- Umbilical hose;
- Power sheave for umbilical;
- Bell winch;
- Clump winch;
- Clump weight;
- Open wet bell;
- Adjustable platform;
- Hydraulic power pack .

Capacity - Designed to accommodate 3 persons: 2 divers and 1 standby diver (bell man)
The temperature range of the system 0 °C up to +35 °C

- Working depth max.: 60 meters
- Safe Working Load: 3650 kg
- Bell winch working load: 3650 kg
- Clump winch working load: 2260 kg
- Umbilical winch working load: 560 kg





(c) IHC Hytech B.V.

DIVING INSTALLATIONS

Wet Bell Handling System

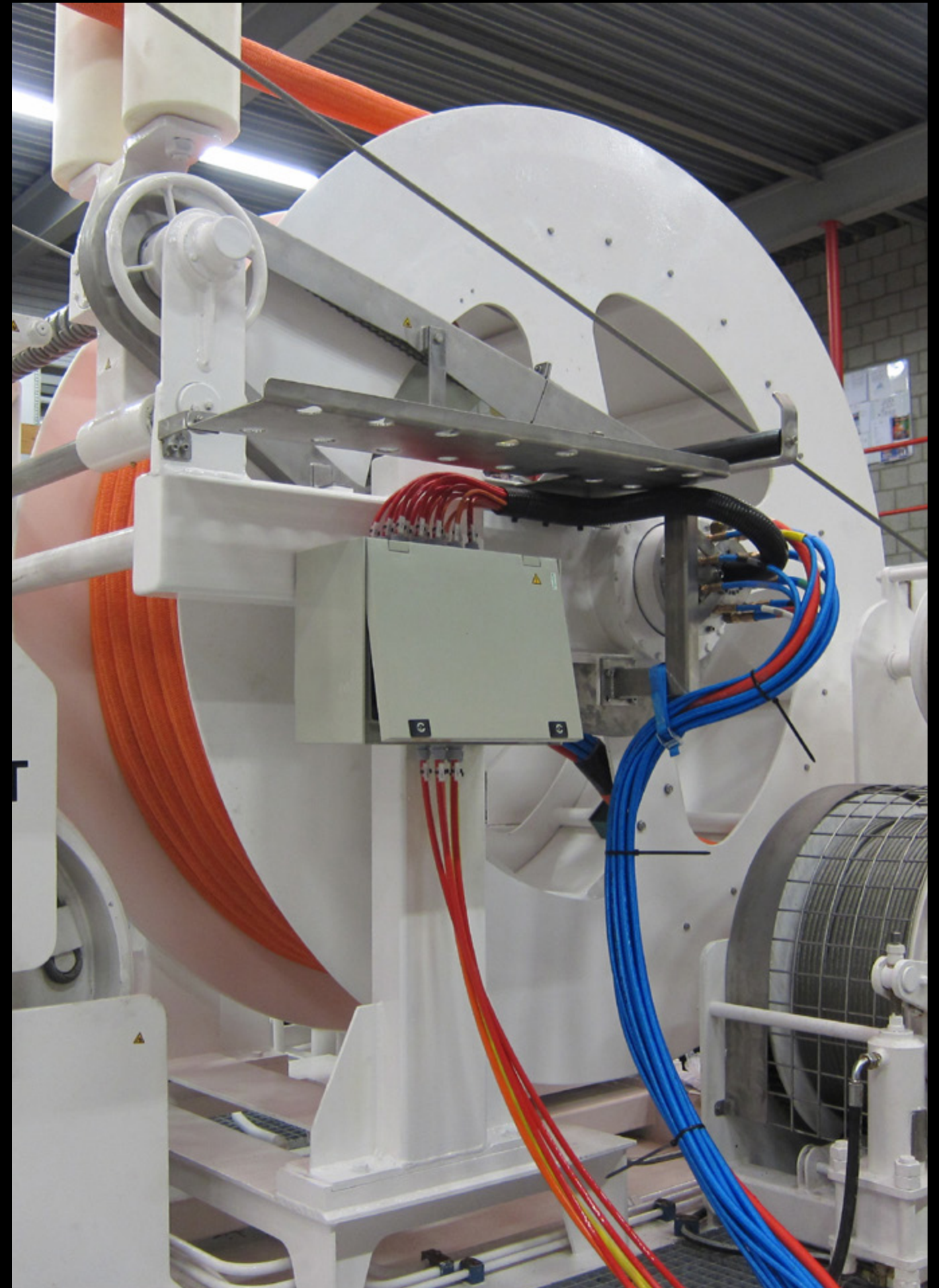
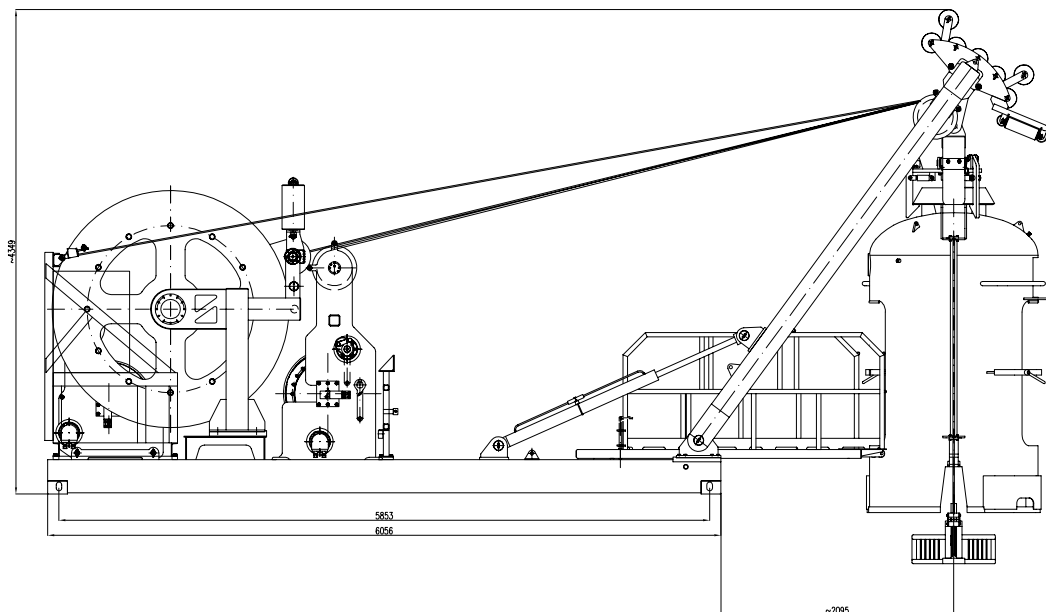
This is an open wet bell handling system that allows 3 divers to work at a depth of 100 m. It is designed for intermittent operations for undefined periods.

The wet bell system consists of the followings components:

- Base frame;
- Hydraulic cylinders;
- A-Frame;
- Umbilical reel winch;
- Umbilical fairleader;
- Clump winch;
- Clump weight;
- Bell winch;
- Open wet bell;
- Adjustable platform;
- Hydraulic power pack.

Capacity - Designed to accommodate 3 persons: 2 divers and 1 standby diver (bell man)
The temperature range of the system +5 °C up to +35 °C

- Wet bell lifting.: 100 meters
- Safe Working Load: 2310 kg
- Bell winch working load: 2280 kg
- Clump winch working load: 1600 kg



VESSEL: NAVY VESSEL
CLIENT: IHC HYTECH B.V.



DIVING INSTALLATIONS

Wet Bell Handling System

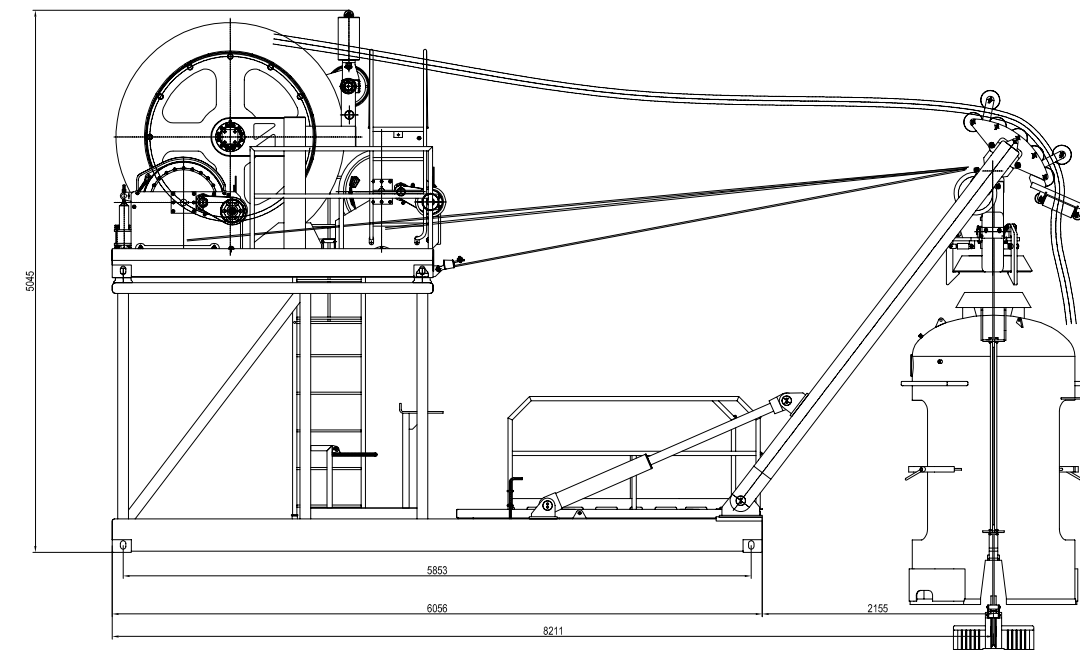
This is an open wet bell handling system that allows three divers to work at a depth of up to 100 m. It is designed for intermittent operations for undefined periods.

The wet bell system consists of the followings components:

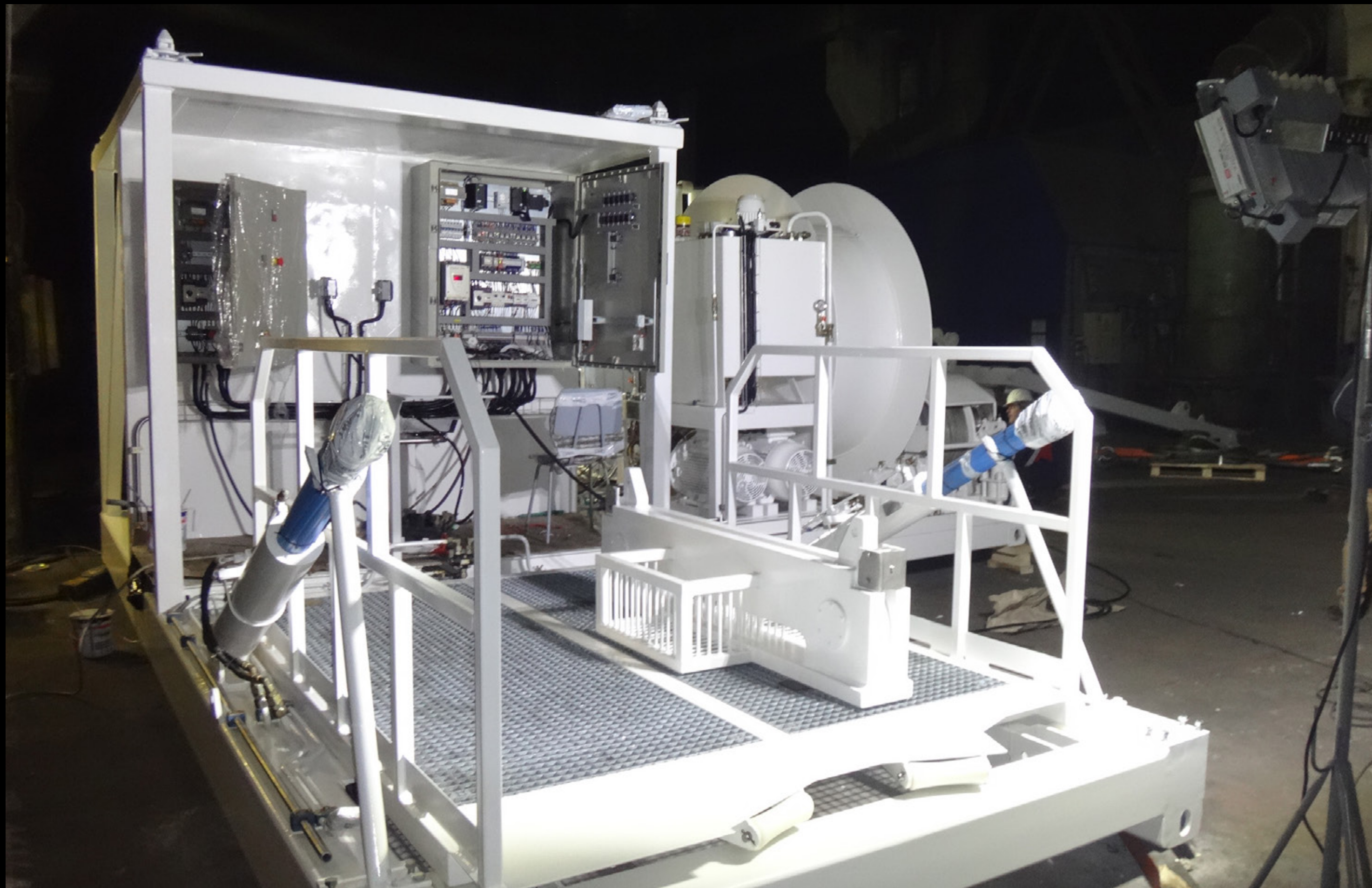
- Base frame;
- Hydraulic cylinders;
- A-Frame;
- Umbilical reel winch;
- Umbilical fairleader;
- Clump winch;
- Clump weight;
- Bell winch;
- Open wet bell;
- Adjustable platform;
- Hydraulic power pack.

Capacity - Designed to accommodate 3 persons: 2 divers and 1 standby diver (bell man)
The temperature range of the system -30 °C up to +35 °C

- Wet bell lifting: 100 meters
- Safe Working Load: 2310 kg
- Bell winch working load: 2280 kg
- Clump winch working load: 1600 kg



VESSEL: OFFSHORE CONSTRUCTION VESSEL
CLIENT: IHC HYTECH B.V.



DIVING INSTALLATIONS

Wet Bell Handling System

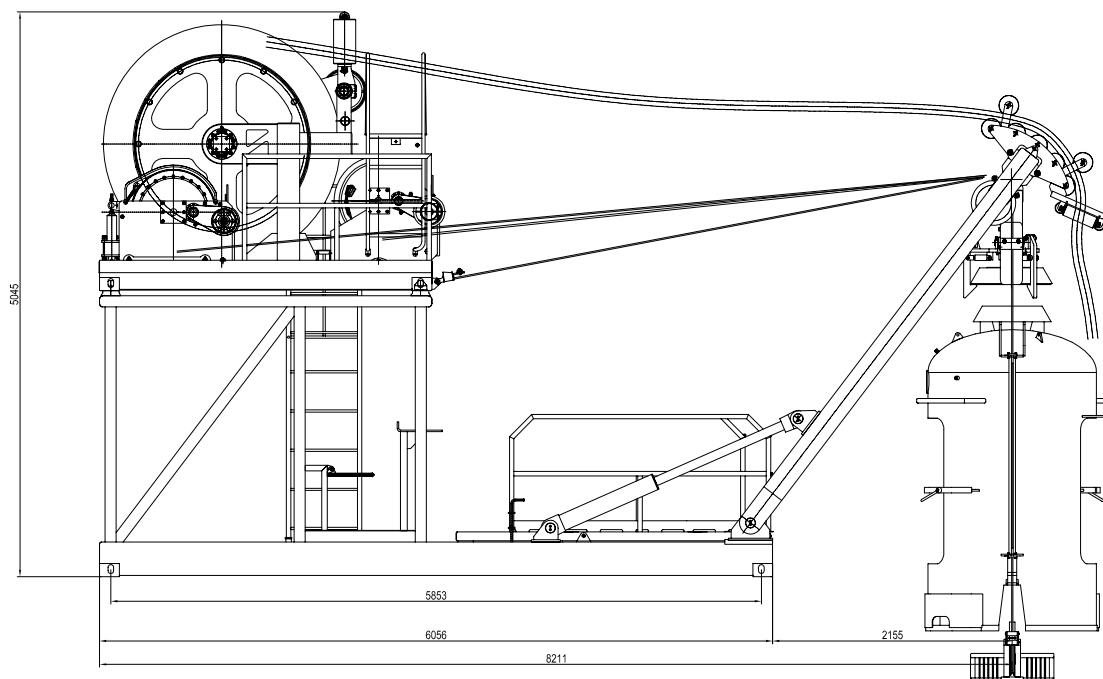
This is an open wet bell handling system that allows three divers to work at a depth of up to 100 m. It is designed for intermittent operations for undefined periods.

The wet bell system consists of the followings components:

- Base frame;
- Hydraulic cylinders;
- A-Frame;
- Umbilical reel winch;
- Umbilical fairleader;
- Clump winch;
- Clump weight;
- Bell winch;
- Open wet bell;
- Adjustable platform;
- Hydraulic power pack.

Capacity - Designed to accommodate 3 persons: 2 divers and 1 standby diver (bell man)
The temperature range of the system -30°C up to +35°C

- Wet bell lifting: 100 meters
- Safe Working Load: 2310 kg
- Bell winch working load: 2280 kg
- Clump winch working load: 1600 kg`



VESSEL: OFFSHORE CONSTRUCTION VESSEL
CLIENT: IHC HYTECH B.V.



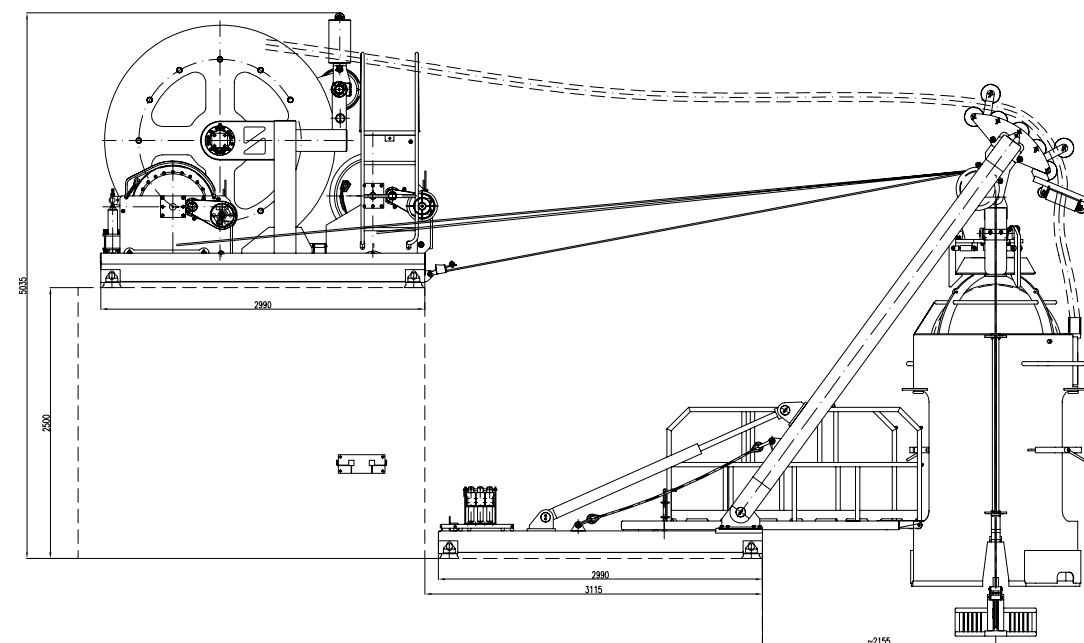
(c) IHC Hytech B.V.

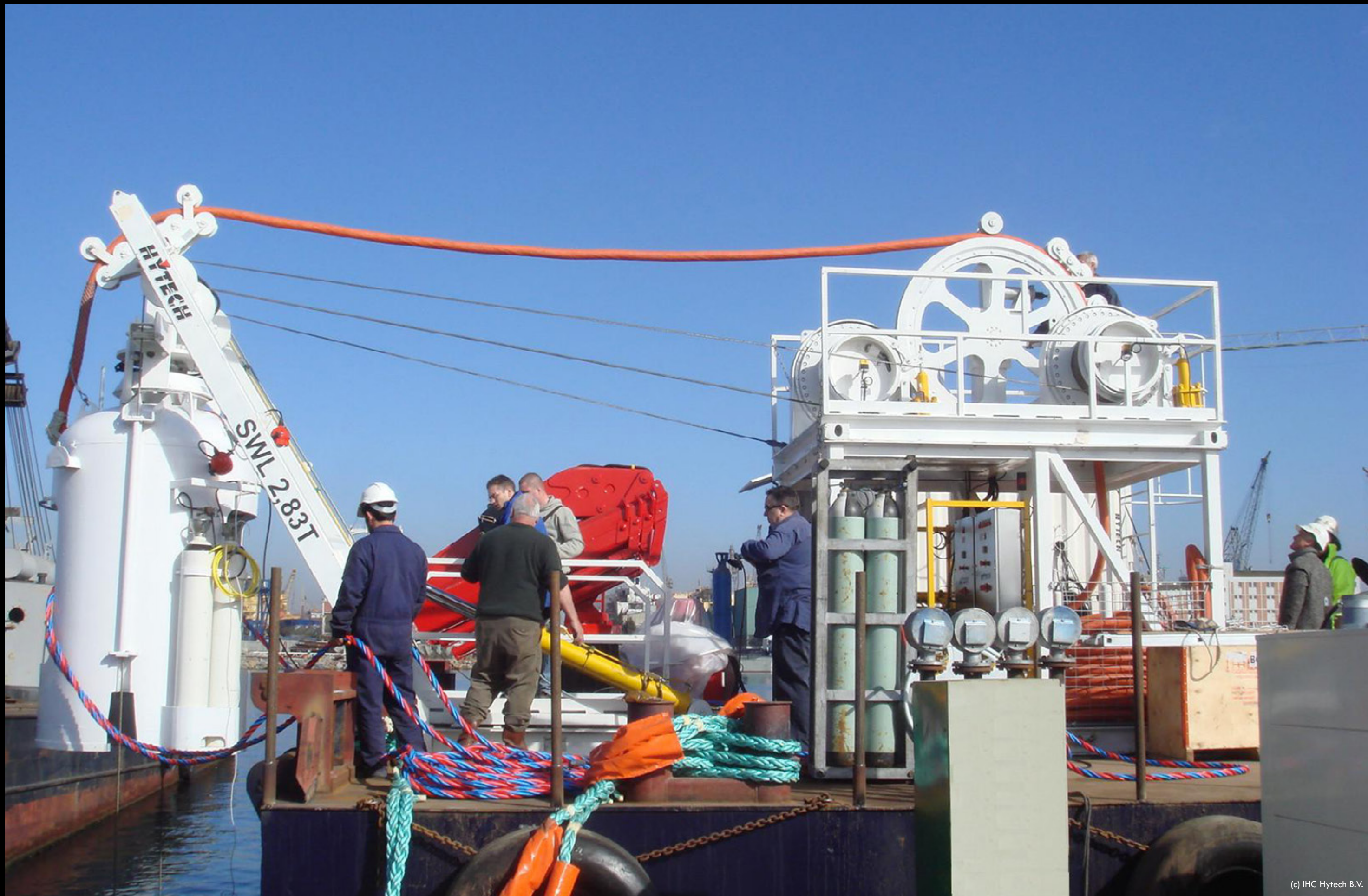
DIVING INSTALLATIONS Wet Bell Handling System

This is an open wet bell handling system designed for intermittent operations for undefined periods.

The wet bell system consists of the followings components:

- Open wet bell;
- A-Frame;
- Base frame;
- Top frame;
- Adjustable platform;
- Clump weight;
- A-frame Cylinders;
- Hydraulic cylinders for jaws;
- Bell winch;
- Clump winch;
- Umbilical winch;
- Steel wire for bell winch & clump winch;
- Electric - Hydraulic installation.





(c) IHC Hytech B.V.

DIVING INSTALLATIONS

Wet Bell Handling System

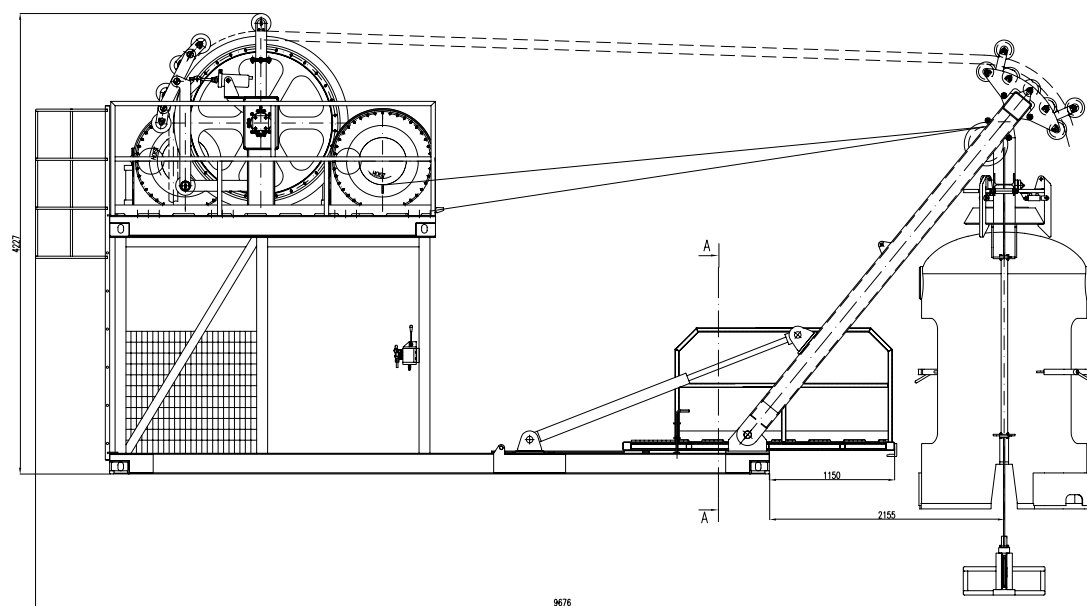
This is an open wet bell handling system that allows three divers to work at a depth of up to 100 m. It is designed for intermittent operations for undefined periods.

Main characteristics:

Overall dimensions in stored position: 6056x2440x4575 mm

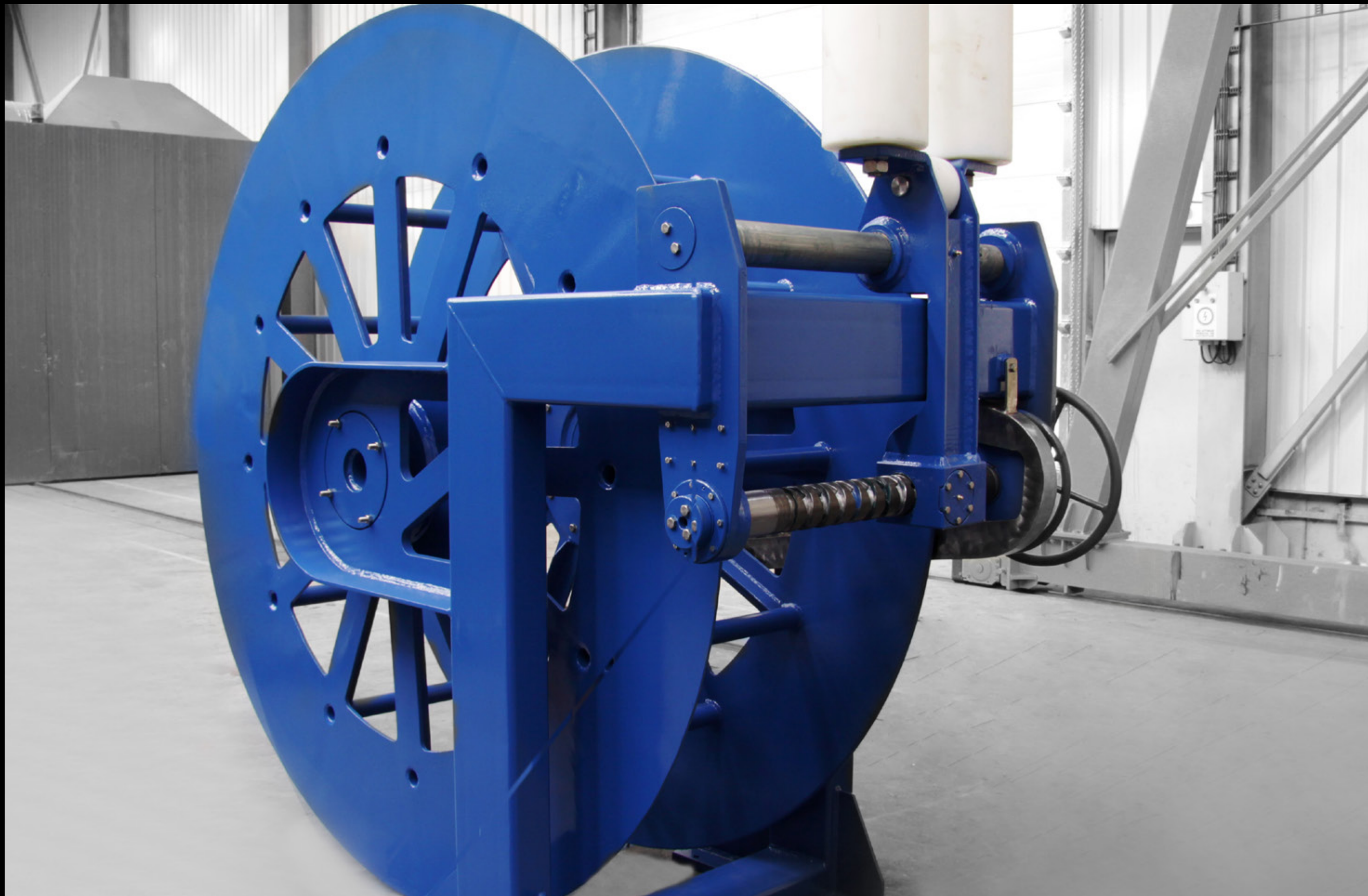
The wet bell system consists of the followings components:

- Bell capacity: 1500 inner diameter suitable for three divers;
- Bell travel: Up to 100 meters;
- Clump travel: Up to 100 meters;
- Bell speed down/up: 0-15 m/min.;
- Bell working load: 2230 kg;
- Clump speed down/up: 0-15 m/min.;
- Clump recovery load: 3130 kg;
- Installed power on HPU: 2x15 kW;
- Design temperature: +5°C up to +35°C.



(c) IHC Hytech B.V.

VESSEL: DIVING VESSEL
CLIENT: IHC HYTECH B.V.



DIVING INSTALLATIONS

Umbilical Winches

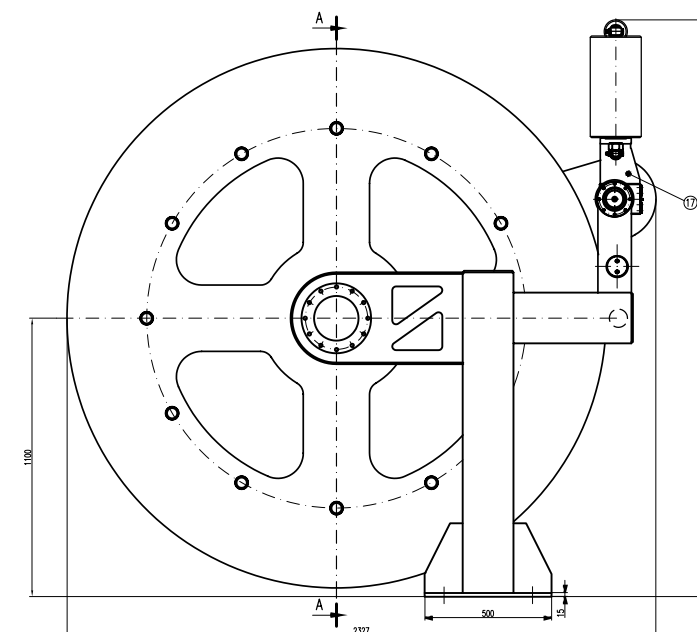
Umbilical winch is provided as a component part for equipping the system for storage and manage the umbilical line which ensure all necessary for a proper use of the bell.

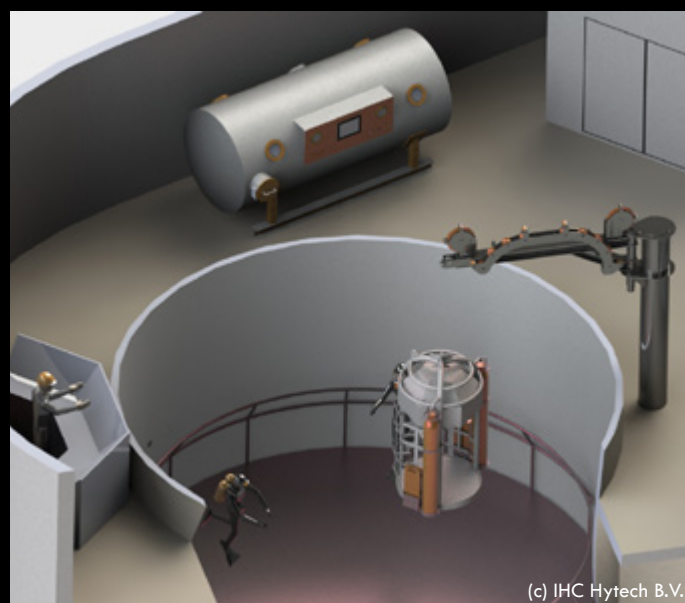
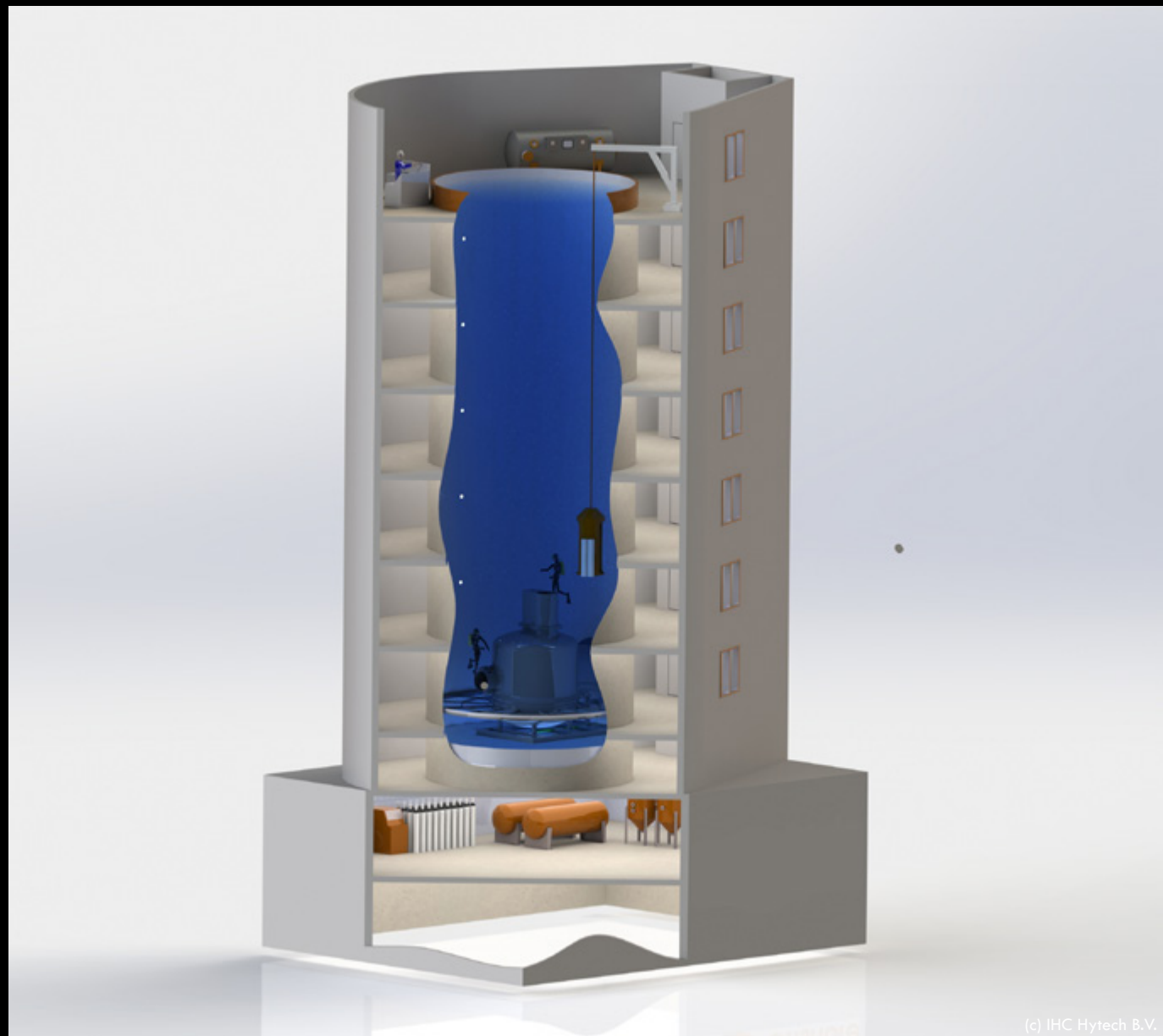
DRUM

NOMINAL FLOW	15 l/min
NOMINAL PRESSURE DIFFERENTIAL	60 bar
AVERAGE HAULING SPEED	18 m/min

GEAR MOTOR:

Reduction gear Reggiana Riduttori RR510DSS, I=13.6
 Driving flange 28009,
 Fixin flange 12001
 Adaptors set between the reduction gear and hydraulic motor
 Hydraulic motor Sauer-Danfoss OMR 315, code 151-0417





Integrated Underwater Training Facility is used for the following:

- submarine escape training / free escape;
- exit and re-entry of submarines
- diving training in controlled; environment / surface supplied diving with wet bell / Scuba and Rebreather diving.

DMT Scope of supply:

- wet bell diving system, complete with HPU and man rider winches;
- adjustable training platform with electric winches;
- controls;
- other specialised equipment.

DMT MARINE EQUIPMENT

HEADQUARTERS - Romania

Prelungirea Foltanului no. 13,
COD 807325, Sat Costi,
Comuna Vanatori, Galati,
Romania

Romania

Tel: +40 236 406 006
Fax: 40 236 464 050

office.ro@dmr-windes.com

Ukraine

Tel: + 380 512 366 542
Fax: + 380 512 447 203

sales.ua@dmr-windes.com

Russia

Tel: + 7 812 922 04 33

sales.ru@dmr-windes.com

Turkey

Tel: +90 216 494 00 72
Fax: +90 216 494 00 62

sales.tr@dmr-windes.com

Italy

Tel: +39 010 37 60 800
Fax: +39 010 37 60 759

sales.it@dmr-windes.com

UAE

Tel: +971 50 6009887

sales.uae@dmr-windes.com

USA

Tel: +1 504 258 1707

sales.usa@dmr-windes.com

The Netherlands

Tel: +31 38 460 3304
Fax: +31 38 460 0803

sales.nl@dmr-windes.com

Singapore

Tel: + 65 865 779 58
Fax: + 65 629 497 21

sales.sg@dmr-windes.com

Belgium

Tel: +32 34 587 691

motec@dmr-windes.com

China

Tel: +86 138 5221 9176
Fax: +86 514 8588 1767

sales.cn@dmr-windes.com

Australia

Tel: + 64 21 689 101

sales.australasia@dmr-windes.com

Brazil

Tel: +55 (71) 999 690 905

sales.br@dmr-windes.com

India

Tel: +91 90732 57388

sales.india@dmr-windes.com